



eldes®

PITBULL ALARM PRO
PITBULL ALARM PRO - 3G
GSM Alarm System

CONTENTS

Technical Specifications	4
Components of PITBULL ALARM PRO and PITBULL ALARM PRO-3G	5
1. 7-STEP START GUIDE	6
OVERVIEW	6
2. QUICK START GUIDE	9
2.1. How and where to fix the holder to the wall	9
2.2. Prepare the SIM card	12
2.3. How to insert the SIM card	13
2.4. Plug the power supply connector into the device	14
2.5. Place the holder into the device	14
2.6. Slide it up to fix it until you hear a "click" sound	14
2.7. Fix the holder firmly to the wall, using the supplied screws	14
2.8. After positioning the device, secure the position using the supplied screws and nuts	15
2.9. Insert the plug into the mains socket	15
2.10. How to check the detector is working	15
2.11. About the back-up battery and how to replace it	15
2.12. How to program PITBULL ALARM PRO (or PITBULL ALARM PRO -3G) alarm system	17
2.13. How to arm and disarm the system	20
2.14. A 15 second delay allows you to leave the premises	21
2.15. Receiving an alarm call	21
2.16. In case of mains power failure	22
2.17. Receiving an SMS text message when temperature exceeds the set values	22
2.18. Additional capabilities	22
3. HOW TO MANAGE THE WIRELESS DEVICES	23
3.1. How to pair a wireless device with the system	25
3.2. How to remove a wireless device from the system	29
3.3. EKB3W/EWKB4 wireless keypad overview	31
3.4. EWK2 wireless keyfob overview	39
3.5. EWM1 - Wireless Power Socket	42
3.6. EWF1/EWF1CO - Wireless Smoke/CO Detector	44
3.7. EWKB5 Wireless Touchpad Overview	45
4. HOW TO PROGRAM THE SYSTEM USING YOUR MOBILE PHONE	60
5. HOW TO PROGRAM THE SYSTEM USING EKB3W/EWKB4 WIRELESS KEYPAD	73
6. TROUBLESHOOTING	96

7. ADDITIONAL INFORMATION FOR ADVANCED USERS	97
7.1. How to connect a wired siren or a LED indicator to the wired output	97
7.2. How to connect a sensor to the wired zone	101
7.3. Automatic system arming/disarming	106
7.4. Zones	106
7.5. Tamper	109
7.6. Programmable (PGM) outputs	109
7.7. Siren	111
7.8. Alarm indications and notifications	113
7.9. System notifications	114
7.10. Back-up battery, mains power supply status monitoring and memory	117
7.11. SMS Text Message Delivery Restrictions	118
7.12. SMS Forward	118
7.13. Monitoring station	120
7.14. Event Log	129
7.15. System configuration using Eldes Utility software	129
7.16. DUAL SIM MANAGEMENT	129
7.17. How to reset the system to default settings	132
7.18. How to upgrade the firmware locally via USB connection	132
7.19. How to upgrade the firmware remotely via GPRS connection	134
7.20. Service Mode	135
7.21. ELDES Cloud Services	135
7.22. About STAY mode and how to activate it by Eldes Cloud Services	136
8. Radio system installation and signal penetration	137
9. RELATED PRODUCTS	143

Copyright © "ELDES, UAB", 2018. All rights reserved.

It is strictly forbidden to copy and distribute the information contained in this document or to pass thereof to a third party without an a priori written authorization obtained from ELDES, UAB. ELDES, UAB reserves the right to update or modify this document and/or related products without an a priori warning. ELDES, UAB hereby declares that GSM alarm system PITBULL ALARM PRO (and PITBULL ALARM PRO -3G) is in compliance with the essential requirements and other relevant provisions of the Directive 2014/53/EU. The declaration of conformity is available at www.eldesalarms.com



Protecting your property with the PITBULL ALARM PRO or PITBULL ALARM PRO -3G alarm system Where and how to use the alarm system

ATTENTION! In order to make your wired/wireless siren work properly (i.e. to sound in case of alarm), you MUST enter the first user phone number (using Eldes Utility software or via phone call). The phone number MUST be entered even if a SIM card is not in use (i.e. not inserted into device)!

The PITBULL ALARM PRO (or PITBULL ALARM PRO -3G) is a convenient, easy to use, remote control security system for houses, cottages, country homes, garages and other buildings.

It uses an internal Nano-SIM card (not supplied), an infrared sensor, communicates with your mobile phone so you can:

- Protect your property while you are away from home
- Switch the system on or off from anywhere in the world at no cost
- Receive SMS text messages updating you on the system status
- Include up to ten users to receive system status messages and/or security alerts
- Receive SMS text messages updating you on the temperature of the surrounding area

PITBULL ALARM PRO (and PITBULL ALARM PRO -3G) alarm system has a built-in wireless module for system extension capabilities. The wireless module easily allows you to pair ELDES-made wireless devices to the system. For more details, please refer to section **3. HOW TO MANAGE THE WIRELESS DEVICES.**

IMPORTANT! Please read the user manual before operating the system. The user manual will show you how to install and operate the alarm security system safely and easily. You'll find a quick start guide in section 1 and 2. To learn how to take advantage of additional functions, see sections 3, 4, 5 and 7.

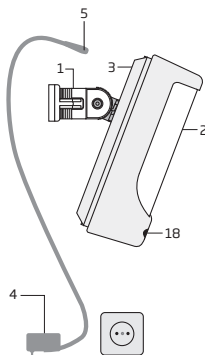
Technical Specifications

Supply voltage.....	11-15V ~ 500mA max
Current used in idle state.....	up to 50mA
Back-up battery voltage, capacity, type	8.4V; 350mAh; Ni-Mh
SIM card type	Nano SIM (PITBULL ALARM PRO - 2 slots; PITBULL ALARM PRO-3G - 1 slot)
GSM modem frequency.....	PITBULL ALARM PRO - European frequencies 900/1800MHz; PITBULL ALARM PRO-3G - European freq. 900/1800/2100MHz; PITBULL ALARM PRO-3G - North American freq. 850/1900MHz
Dimensions	124x67x58mm (4.88x2.64x2.28in)
Operating temperature range; Humidity.....	-10...+40 °C; 0-90% RH @ 0... +40°C (0-90% RH @ +32... +104°F)
Back-up battery operating time.....	up to 24 hours*
Detection angle.....	90°
Maximum motion detection range	10m (32.81ft)
Wireless band	ISM868 for Region1 and ISM915 for Region2
Wireless communication range.....	up to 3000m (9842.5ft) in open areas
Maximum number of wireless devices.....	16
Communications	SMS, Voice Calls (NOT available in PITBULL ALARM PRO-3G), GPRS Network, CSD
Supported protocols.....	Ademco Contact ID (NOT available in PITBULL ALARM PRO-3G), EGR100, SIA IP 2013, Kronos, Cortex SMS
BELL+: siren output commuted values.....	Current - 150mA max.; voltage - 15V (PITBULL ALARM PRO (and PITBULL ALARM PRO -3G) on external power supply) / 7V (PITBULL ALARM PRO (and PITBULL ALARM PRO -3G) on back-up battery)

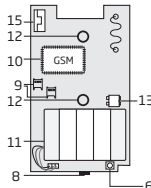
* - with ELDES Cloud Services disabled; with wireless transmitter-receiver module disabled

Components of PITBULL ALARM PRO and PITBULL ALARM PRO-3G

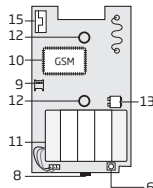
1



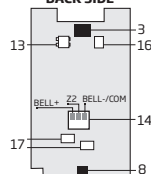
PITBULL ALARM PRO
INSIDE VIEW



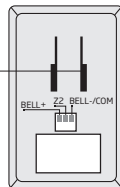
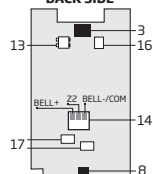
PITBULL ALARM PRO-3G
INSIDE VIEW



PITBULL ALARM PRO
BACK SIDE



PITBULL ALARM PRO-3G
BACK SIDE



- Alarm system's holder for fixing on the wall
- Lens for movement detector
- Power supply socket
- AC/DC power supply
- Power supply connection lead
- Reset button to restore default parameters
- Holder to fix the unit in place
- Mini-USB connector to allow programming via your PC
- Slots for Nano-SIM cards (primary slot is positioned above the secondary one).
- GSM module
- Back-up battery in case of mains power supply failure
- Motion detector to sense possible intruders
- TAMPER button to alert you if anyone interferes with the unit
- Wired zone for wired sensor and output for siren or indicator connection
- Built-in GSM antenna
- Fuse F1 model - MINISMDC050F 0.5A
- Fuse F2 model - MINISMDC020F 0.2A
- LED indicator

ATTENTION! secondary slot is **NOT** available for the device model PITBULL ALARM PRO-3G!

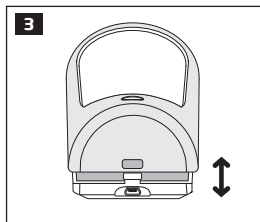
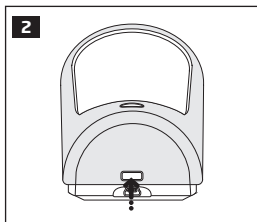
Connector	Description
BELL- / COM	Siren output negative terminal / output terminal / common return terminal
Z2	Security zone terminal
BELL+	Siren output positive terminal

1. 7-STEP START GUIDE

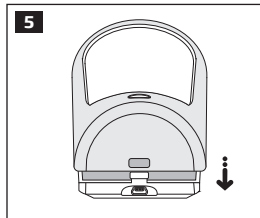
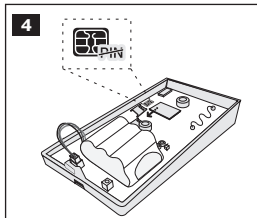
OVERVIEW

This section tells you how to install the PITBULL ALARM PRO (or PITBULL ALARM PRO -3G) alarm system quickly by following the very basic instructions consisting of only 7 steps. For step-by-step device programming using software, please refer to section **2. QUICK START GUIDE**.

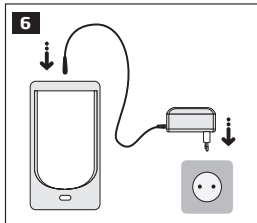
1. Remove the front cover of the device.



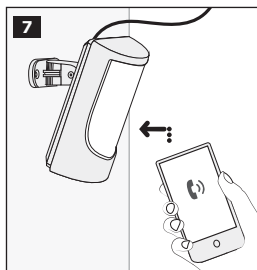
2. Insert the SIM card with disabled PIN code request into the primary slot. Ensure that gold contacts are face down.



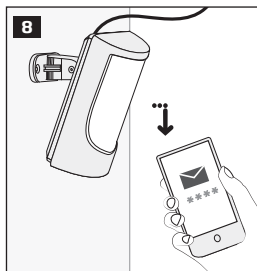
3. Plug the power supply connector into the device and insert the plug into the mains socket



4. Wait for 1 minute for the device to start up. Then using your mobile phone dial the phone number of the SIM card inserted in the device and wait until the phone call is automatically rejected by the device. The device will reply you with SMS text message confirming that your phone number has been successfully stored in the device memory



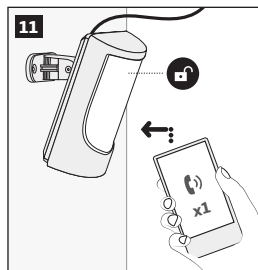
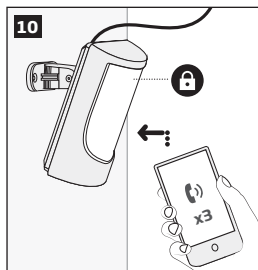
5. In the same previously received SMS text message you'll find an automatically generated temporary SMS password (a random 4-digit combination XXXX). You may change this password using your mobile phone - type an SMS text message containing the following text: **XXXX PSW YYYY** (where **XXXX** is your temporary SMS password, while **YYYY** is a new 4-digit combination SMS password). The result should look something like this: **2583 PSW 1234**. Now send this SMS text message to your device's phone number and wait for a reply confirming that the SMS password has been successfully changed.



6. Your system is now ready to be armed and disarmed. Before arming the system, ensure that you are not standing in front of the device.



7. To arm your system dial the device SIM card's phone number and wait until it rings three times and then drops the call. This means the system is now successfully armed. To disarm the system, dial the SIM card and wait until it rings once and then drops the call. The system is now successfully disarmed. In both cases be sure to wait until the system automatically drops your call. Again in both cases the user will receive a short SMS text message each time the system is successfully armed or disarmed.



2. QUICK START GUIDE

OVERVIEW

This section tells you how to install the PITBULL ALARM PRO (or PITBULL ALARM PRO -3G) alarm system quickly and easily and covers all the procedures required for full system operation. The alarm system functions via the GSM network, so you will first need to purchase a SIM card so you can 'talk' to and program your device via your mobile phone. Due to the dual element technology of a built-in PIR sensor, the device features the pet immunity against the animals of up to 40 kg weight in order to prevent them from causing false alarms while moving within the secured premises.

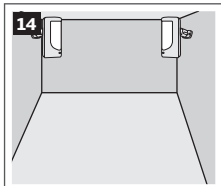
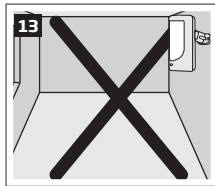
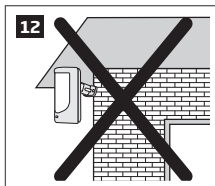
Your PITBULL ALARM PRO (or PITBULL ALARM PRO -3G) alarm system has a built-in wireless module providing expansion capabilities to your system by pairing additional ELDES wireless devices to it. However, the PITBULL ALARM PRO (and PITBULL ALARM PRO -3G) system can operate fully without any wireless devices paired to it.

This section does not cover the procedures for adding wireless devices to the system. If you intend to use the wireless devices with your alarm system, follow the instructions for setting up the PITBULL ALARM PRO (or PITBULL ALARM PRO -3G) in this section then refer to section **3: HOW TO MANAGE THE WIRELESS DEVICES**.

Step-by-step system installation

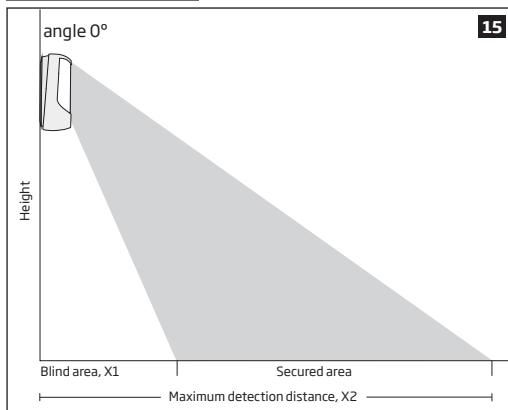
2.1. How and where to fix the holder to the wall

The system should be installed indoors, **in stationary environment ONLY**. Choose a location where unauthorised entry is most likely.

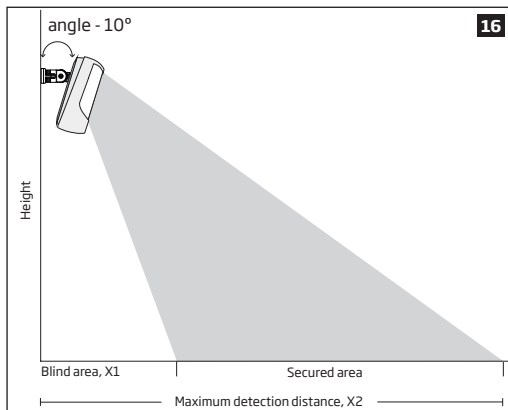


To prevent false alarms, avoid installing the unit in the following locations:

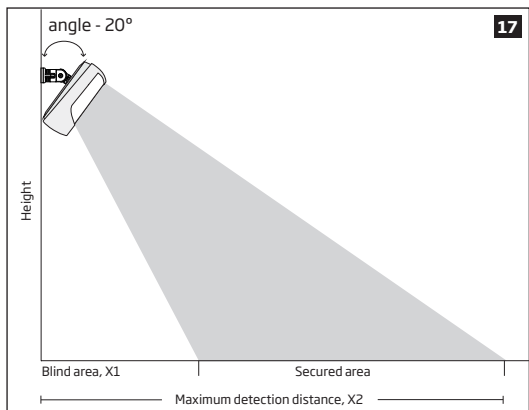
- With the lens facing direct sunshine, for instance in front of windows
- Places with high temperature fluctuations, such as near fireplaces, boilers, ovens etc.
- Anywhere with high dust or air flow
- In an area surrounded by metal or thick walls where the GSM connection may be lost



height	X1	X2
2,5m (8.20ft)	3,5m (11.48ft)	11m (36.09ft)
2,3m (7.55ft)	3m (9.84ft)	11m (36.09ft)
2,1m (6.89ft)	1,5m (4.92ft)	11m (36.09ft)
1,5m (4.92ft)	0m (0ft)	11m (36.09ft)



height	X1	X2
2,5m (8.20ft)	2,5m (8.20ft)	10m (32.81ft)
2,3m (7.55ft)	2,5m (8.20ft)	8m (26.25ft)
2,1m (6.89ft)	1,5m (4.92ft)	8m (26.25ft)
1,5m (4.92ft)	0m (0ft)	4,5m (14.76ft)



height	X1	X2
2,5m (8.20ft)	2m (6.56ft)	5m (16.4ft)
2,3m (7.55ft)	1,5m (4.92ft)	4.5m (14.76ft)
2,1m (6.89ft)	1m (3.28ft)	4.5m (14.76ft)
1,5m (4.92ft)	0m (0ft)	3m (9.84ft)

2.2. Prepare the SIM card

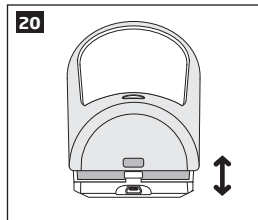
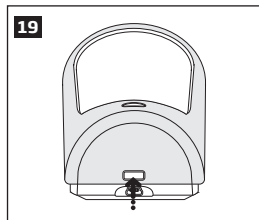
IMPORTANT RECOMMENDATIONS

- We advise you to choose the same GSM SIM provider for your system as for your mobile phone. This will ensure the fastest, most reliable SMS text message delivery service and phone call connection.
- For maximum system reliability we recommend you do NOT use a Pay As You Go SIM card. Otherwise, in the event of insufficient credit balance on the SIM card, the system would fail to make a phone call or send messages.
- We also recommend you to disable **call forwarding, voice mail/text message reports on missed/busy calls**. Please contact your GSM provider for more details on these services and how to disable them.

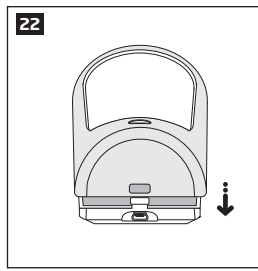
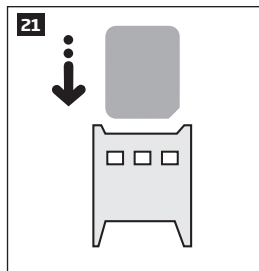
ATTENTION: The system PITBULL ALARM PRO-3G is compatible with pure 3G cards. The system PITBULL ALARM PRO is **NOT** compatible with pure 3G SIM cards. Only 2G/GSM SIM cards and 3G SIM cards with 2G/GSM profile enabled are supported by PITBULL ALARM PRO. For more details, please contact your GSM operator.

2.3. How to insert the SIM card

The SIM card must be prepared as described in section 2.2. **Prepare the SIM card** before being inserted into the device.



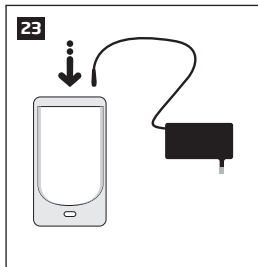
To insert the SIM card, first remove the front cover of the device (containing the detector lens)



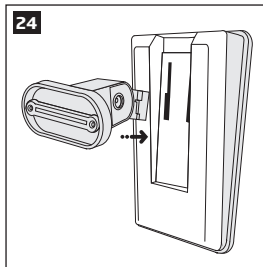
Then insert the SIM card into the slot. Insert SIM card so that gold contacts are face down.

Fit the front cover.

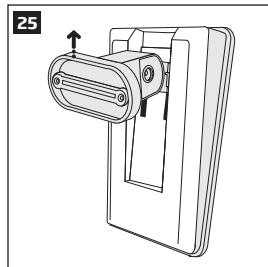
For more information see the diagram of the PITBULL ALARM PRO (or PITBULL ALARM PRO -3G) and the description of components on page <5>.



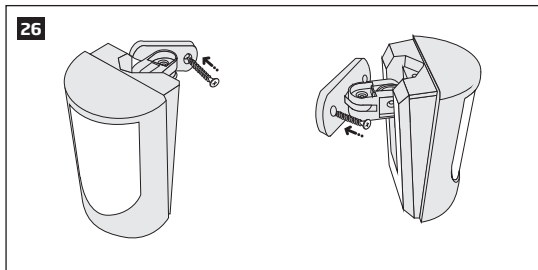
2.4. Plug the power supply connector into the device



2.5. Place the holder into the device

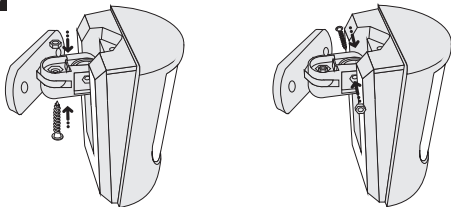


2.6. Slide it up to fix it until you hear a "click!" sound



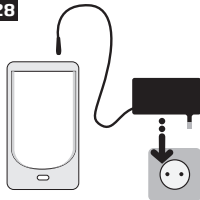
2.7. Fix the holder firmly to the wall, using the supplied screws

27



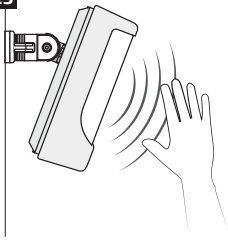
2.8. After positioning the device, secure the position using the supplied screws and nuts

28



2.9. Insert the plug into the mains socket

29



2.10. How to check the detector is working

The system will start in 1 - 2 minutes. To test that the system is working, when the red LED is switched off move your hand in front of the PITBULL ALARM PRO (or PITBULL ALARM PRO - 3G) lens. The system will detect the motion and the LED will light up for a few seconds.

NOTE: Ensure that the device is properly fixed into the holder, otherwise it will prevent from using the back tamper switch for supervision of the enclosure's back side. **For more information** see the diagram of the PITBULL ALARM PRO (or PITBULL ALARM PRO - 3G) and the description of components on page <5>.



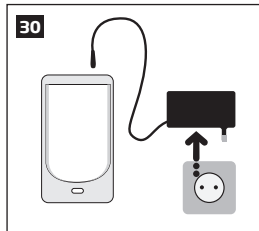
If the LED indicator blinks fast (a few times a second), the SIM card may not be inserted properly or the PIN code may not have been disabled.

2.11. About the back-up battery and how to replace it

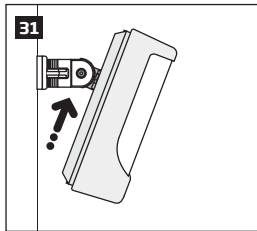
The back-up battery should last for at least two years. Its lifespan will largely depend on the surrounding temperature and the frequency of disruptions to the mains power. During mains failure the battery should power the

system for up to twenty-four hours.

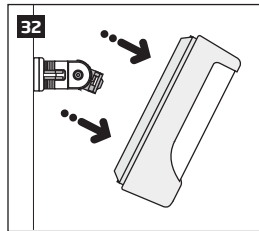
How to replace the battery:



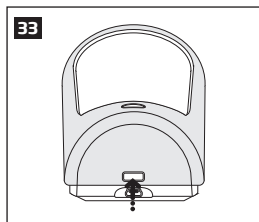
1. Unplug the power supply from the mains electricity socket.



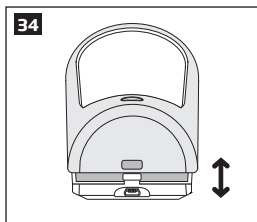
2. Slide the device up.

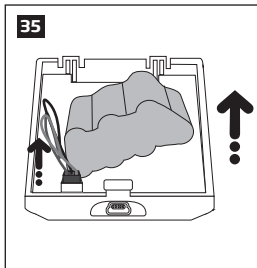


3. Remove the device from its holder.

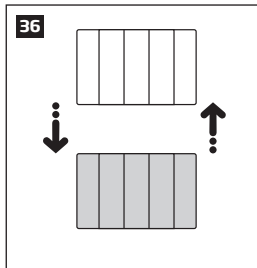


4. Remove the front cover of the device (containing the detector lens)





5. Pull up the battery (unstick it), disconnect the battery's cable and pull the battery out



6. Replace the battery with the type specified in the technical specifications.

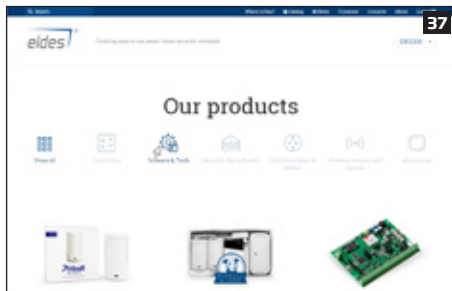
2.12. How to program PITBULL ALARM PRO (or PITBULL ALARM PRO -3G) alarm system

Before you continue, you need to program your PITBULL ALARM PRO (or PITBULL ALARM PRO -3G) system. We recommend that you program your alarm system using your PC and *Eldes Utility software* as it's the quickest, easiest way and offers more options for your system, such as flexible SMS text message management.

NOTE If you wish to program the PITBULL ALARM PRO (or PITBULL ALARM PRO -3G) alarm system by SMS text message, please refer to section **4. HOW TO PROGRAM THE SYSTEM USING YOUR MOBILE PHONE**. If not, please proceed to section **2.10.1 Download Eldes Utility software**.

2.12.1. Download Eldes Utility software.

Visit www.eldesalarms.com , where you will find a link to the ELDES *Utility software* under the menu option **Software&Tools**.



Once you are at ELDES *Utility software* section, please choose to Download the setup file for your appropriate OS: Windows, MAC, Linux (left-click on the *Eldes Utility software (setup.exe)*).

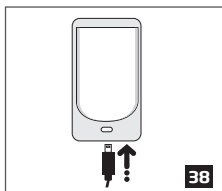
After the successful download and installation process, you will be able to launch *Eldes Utility software* and start using it.

2.12.2. Install Eldes Utility software.

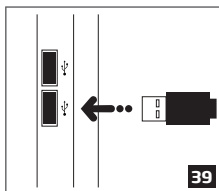
NOTE: You do not have to repeat the installation process the next time when you want to run *Eldes Utility software* again.

2.12.3. Connect PITBULL ALARM PRO (or PITBULL ALARM PRO -3G) to your PC via the USB cable

IMPORTANT: Before connecting PITBULL ALARM PRO (or PITBULL ALARM PRO -3G) to your PC via the USB cable, first ensure the PITBULL ALARM PRO (or PITBULL ALARM PRO -3G) is powered up.



Plug the mini-USB connector into the device.

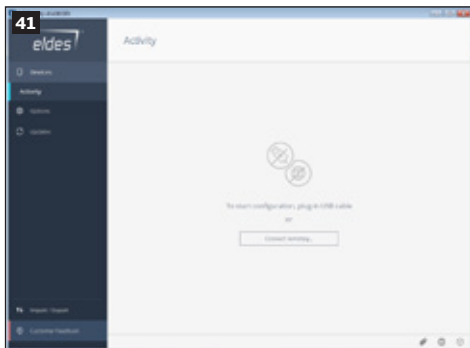


Plug the USB connector into your PC.

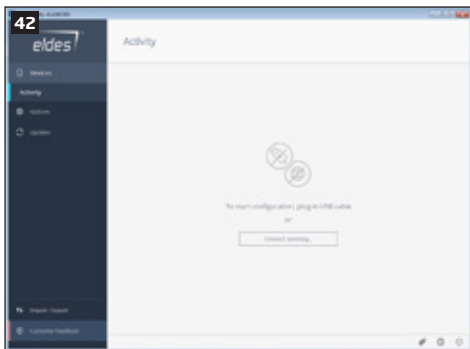
2.12.4. Run Eldes Utility software.



Run the software anytime you want by double left-clicking on the *Eldes Utility software* shortcut located on the desktop.



Upon successful first-time connection, you will get to the main window of *Eldes Utility software*.



After the primary installation process is finished, in order start configuration, you will simply have to plug-in USB cable into your device and PC. After the connection is established, you will have to register your installer account, which takes less than 5 minutes. Then you will be addressed to the device's main configuration section, named Dashboard. From there on, you will have to program the PITBULL ALARM PRO (or PITBULL ALARM PRO -3G) alarm system. After completing all required settings, your system will be ready for use.

2.13. How to arm and disarm the system

To arm your system dial the SIM card and wait until it rings three times and then drops the call. The system will initiate the exit delay countdown (by default - 15 seconds) intended for user to leave the secured area. The countdown is indicated by short beeps provided by the buzzer built in to the PITBULL ALARM PRO (or PITBULL ALARM PRO -3G) device. When the countdown is over, it will mean that the system has been successfully armed.

To disarm the system, dial the SIM card BEFORE you enter the secured premises and wait until it rings once and then drops the call. If you make a call AFTER you have entered the secured premises, then the system will initiate the entry delay countdown (by default - 15 seconds) intended for user to disarm the system. The countdown is indicated by short beeps provided by the buzzer built in to the PITBULL ALARM PRO (or PITBULL ALARM PRO -3G) device or by EWKB4 keypad's mini-buzzer (or by both, if EWKB4 keypad is added to the alarm system and audio indication function is enabled). If the user is able to disarm the system by phone call before the entry countdown ends, then it will mean that the system has been successfully disarmed no alarm will be caused.

In both cases be sure to wait until the system automatically drops your call. Again in both cases the user will receive a short SMS text message each time the system is successfully armed or disarmed.

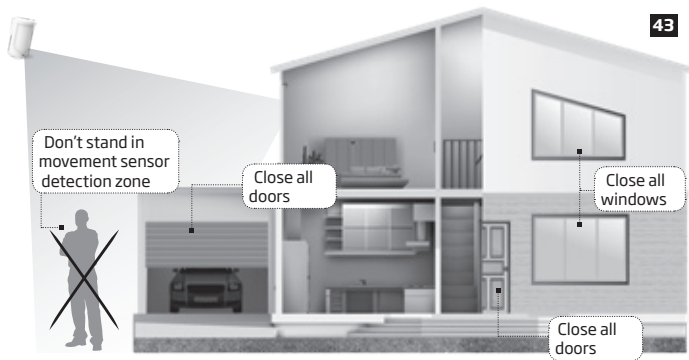
In case when the countdown is over, yet the system has not been disarmed by phone call (or either by any other acceptable method), then the system will cause an alarm and will activate the audio alarm, provided by the buzzer built in to the PITBULL ALARM PRO (or PITBULL ALARM PRO -3G) device. By default, the audio alarm function is enabled and will last for 1 minute.

IMPORTANT: If the system is not armed due to violated tampers or zones, the user will receive sms notification about it.

IMPORTANT: Dialling the SIM card is free of charge as the system drops your call in both cases.

Before arming the system it is necessary to close all doors and windows in the secured area and move yourself away from the movement detection field.

Alternatively, you can arm/disarm your PITBULL ALARM PRO (or PITBULL ALARM PRO -3G) system by sending an SMS text message (see section **4. HOW TO PROGRAM THE SYSTEM USING YOUR MOBILE PHONE**) as well as using a wireless keypads EKB3W/EWKB4 (see section **3.3.3. How to arm the system by EKB3W/EWKB4** and **3.3.4. How to disarm and turn off alarm by EKB3W/EWKB4**) or a wireless keyfob EWK2 (see section **3.4.1. How to arm the system by EWK2** and **3.4.2 How to disarm and turn off alarm by EWK2**).



2.14. A 15 second delay allows you to leave the premises

When you arm the system via your phone, a keyfob or a keypad, the system will give you a 15 second delay before it activates, as well as it will initiate the exit delay countdown (indicated by short beeps provided by the buzzer built in to the PITBULL ALARM PRO (or PITBULL ALARM PRO -3G) device; by default - 15 seconds), giving you time to leaving the premises. You can change the time delay at any time (see *Eldes Utility software's documentation*).

The red LED on the detector lens will start to blink, indicating the time delay is in operation and you must leave room. The red light will go off after 15 seconds when the system will be armed.

2.15. Receiving an alarm call

When the detector is armed and motion is detected in the room, the system will send a SMS text message to *User 1* and then ring the user until the call is answered. If the call is not answered after several rings (predetermined by your mobile phone operator) the system will hang up. If the call is not picked up by *User 1*, the system will ring all the pre-programmed numbers in order of priority starting with *User 2* until a user picks up or the call expires. If the first user is "busy" or "out of radio coverage", the system will also ring the next pre-programmed number.

You can also program the system to send an SMS text message to all users (see *Eldes Utility software's documentation*).

2.16. In case of mains power failure

The system will automatically switch to the back-up battery supply in case of mains power failure. At this time you will receive an SMS text message warning message after 30 seconds. When the mains power has been restored you will also receive an SMS text message after 30 seconds. Likewise the system will warn you by when the back-up battery is getting low, just before the system is switched off.

2.17. Receiving an SMS text message when temperature exceeds the set values

The system comes equipped with a feature intended for temperature measurement in the surrounding area. This feature allows to monitor the temperature in real time and receive a notification by SMS text message, identified as the Temperature Info SMS, to user phone number when the set temperature MIN or MAX thresholds are exceeded. For this purpose you may use the system's built-in temperature sensor or one of the temperature sensors incorporated in the wireless device (if any). The following wireless devices contain a built-in temperature sensor:

- EWP2/EWP3 - wireless PIR sensor (motion detector).
- EWD2/EWD3 - wireless magnetic door contact/shock sensor/flood sensor.
- EWKB4 - wireless keypad.
- EWS3 - wireless indoor siren.
- EWS2 - wireless outdoor siren.
- EWF1 - wireless smoke detector.
- EWF1CO - wireless smoke and CO detector.
- EW2 - wireless zone and PGM output expansion module supports the temperature measurement feature as well. However, an external temperature sensor (-s) must be connected to EW2 for this purpose.

In order to view real-time temperature of a selected device, user must send an SMS message, containing the following command:

**View real-time
temperature value
of the pre-selected
temperature sensor**

SMS

SMS text message content:

XXXX_TEMP

Value: XXXX - 4-digit SMS password.

Example: 1111_TEMP

By default, temperature measurement feature is disabled. To enable it and to set Min Max temperature values, please refer to Eldes Utility software or section **4. HOW TO PROGRAM THE SYSTEM USING YOUR MOBILE PHONE**.

NOTE: The supported temperature range of PITBULL ALARM PRO is -10... +40°C and measured at +/-2°C accuracy. When temperature sensor of a wireless device is selected, the operating temperature range of the wireless device corresponds the supported temperature range.

2.18. Additional capabilities

You can also use your mobile to request information about the system, the power supply and the network quality.

PITBULL ALARM PRO system comes equipped with built-in wireless module allowing to enhance your security system with the addition ELDES wireless PIRs (Passive Infrared Sensors), sirens, magnetic door and window sensors or expansion modules. See section **3. HOW TO MANAGE THE WIRELESS DEVICES** for more details.

3. HOW TO MANAGE THE WIRELESS DEVICES

IMPORTANT: Before you continue, first follow the entire section **2. QUICK START GUIDE** and prepare the system for use as described and follow through section **8. Radio system installation and signal penetration**.

OVERVIEW

Your PITBULL ALARM PRO (or PITBULL ALARM PRO -3G) has a built-in wireless module. This section tells you how to pair and remove a wireless device using your PC and *Eldes Utility software* as well as briefly describing every available wireless device which can operate together with your PITBULL ALARM PRO system.

It is possible to connect up to 16 wireless devices to your alarm system. This includes the following:

- EWP2 - wireless PIR sensor (motion detector).
- EWP3 - wireless PIR sensor (motion detector).
- EWD2 - wireless magnetic door contact/shock sensor/flood sensor.
- EWD3 - wireless magnetic door contact/shock sensor/flood sensor.
- EWS3 - wireless indoor siren.
- EWS2 - wireless outdoor siren.
- EWK2/EWK2A - wireless keyfobs (EWK2A is a panic button).
- EKB3W - wireless keypad.
- EWKB4 - wireless keypad.
- EWKB5 - wireless touchpad.
- EW2 - wireless zone and PGM output expansion module.
- EWF1 - wireless smoke detector.
- EWF1CO - wireless smoke and CO detector.
- EWR2 - wireless signal repeater.
- EWM1 - wireless power socket.

You can also attach more devices which are not part of the ELDES wireless range by using expansion module EW2 with 4 zones and 2 programmable outputs.

Main features of built-in wireless module:

- Up to 16 ELDES wireless devices per one PITBULL ALARM PRO (or PITBULL ALARM PRO -3G) unit;
- Two-way wireless communication;
- Supervised communication link with configurable self-test period;
- Maximum wireless connection range is up to 3000m (9842.5ft) in open areas, while within a building wireless range will depend on building construction.

For more details on technical specifications and installation of the wireless devices, please refer to **8. RADIO SYSTEM INSTALLATION AND SIGNAL PENETRATION** (see page 137) or the latest user manual of the wireless device located at www.eldesalarms.com

The wireless devices can operate at a range of up to 3000m (9842.5ft) in open areas. The wireless connection is two-way and operates in one of four available channels in ISM868 (EU version) band. When Eldes Utility software is launched, the frequency time of attempt of all NOT added wireless devices, that have frequency time of attempt higher than 10 sec, is changed to 10 sec. After Eldes Utility software is closed, frequency time of attempt for every individual device is changed as it was.

EKB3W, EWKB4, EW2, EWP2, EWP3, EWS2, EWS3, EWF1, EWF1CO, EWM1:

- First 360 attempts after the device startup (reset) - every 10 seconds.
- The rest of attempts - every 1 minute.

EWD2, EWD3:

- First 360 attempts after the device startup (reset) - every 10 seconds.
- The rest of attempts - every 2 minutes.

NOTE: In case if Remote Connection session being activated, the frequency time of attempts for every wireless device will be exactly the same as default Test Time period, indicated below.

Once the wireless device is paired, it will attempt to exchange data with alarm system. Due to battery saving reasons, all ELDES wireless devices operate in sleep mode. The data exchange will occur instantly if the wireless device is triggered (zone alarm or tamper alarm) or periodically when the wireless device wakes up to transmit the supervision signal, based on Test Time value, to the system as well as to accept the queued up command (if any) from the system. By increasing the Test Time period, EWS2/EWS3 siren response time will decrease. Example: *The alarm occurred at 09:15:25 and the system queued up the command for EWS3 siren to start sounding. By default, Test Time value of EWS3 siren is 7 seconds, therefore EWS3 siren will sound at 09:15:32.*

By default, the Test Time period is as follows (customizable):

- EWKB4, EWD3: every 5 minutes.
- EKB3W, EWD2, EWP2, EWP3: every 60 seconds.
- EWM1, EW2, EWF1, EWF1CO: every 30 seconds.
- EWS2, EWS3: every 7 seconds.

To set a different Test Time value, please refer to *Eldes Utility software*.

NOTE: Test Time affects the wireless device pairing process due to the alarm system listening for the incoming data from the wireless device. The system pairs with the wireless device only when the first data packet is received.

NOTE FOR EKB3W/EWKB4: In comparison with other ELDES wireless devices, EKB3W/EWKB4 keypads features some exceptions regarding the wireless communication. For more details on EKB3W/EWKB4 keypad's wireless communication and back-light timeout, please refer to **3.3.1. Sleep mode, how to wake up EKB3W/EWKB4 and view system alarms or faults.**

Wireless signal status monitoring

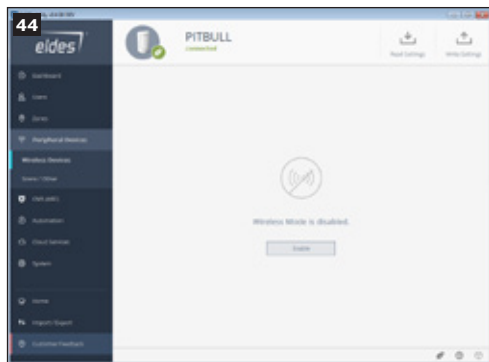
If the wireless signal is lost due to poor signal strength or low battery power on a certain wireless device and does not restore within 4-hour period, the system will cause an alarm (by default, the alarm is disabled). This event is identified as Wireless Signal Loss. By default, indicated as *No wireless signal from wless-dev wless-id Tamper x* in the SMS text message (*wless-dev* = wireless device model; *wless-id* = 8-character wireless device ID code; *x* = tamper number). The user will also be notified by SMS text message as soon as the wireless signal is restored. The default period for wireless signal loss detection is 1 hour (60 minutes).

In addition, *Eldes Utility software* indicates a timer of the last Test Time signal delivered by a paired and unpaired wireless device. The software will also warn you if the delivery of the Test Time signal is delayed for 5 minutes. In case the Test Time signal delivery of an unpaired wireless device is delayed for a time period 3 times longer than the Test Time of wireless device, a warning will follow.

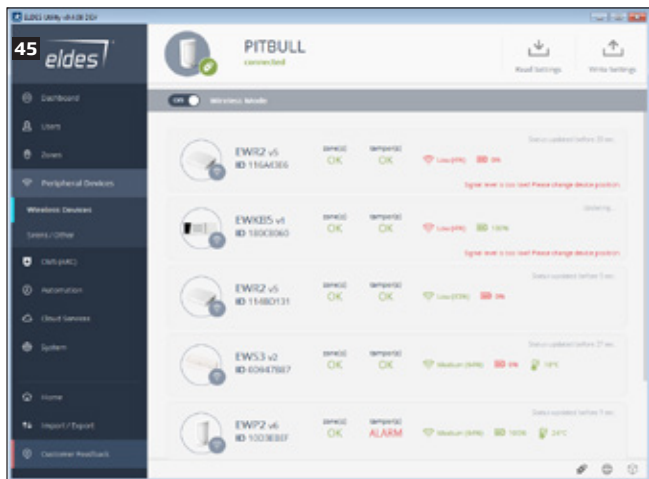
3.1. How to pair a wireless device with the system

IMPORTANT: Before you continue, first ensure the PITBULL ALARM PRO is powered up and connected to your PC via the USB cable.

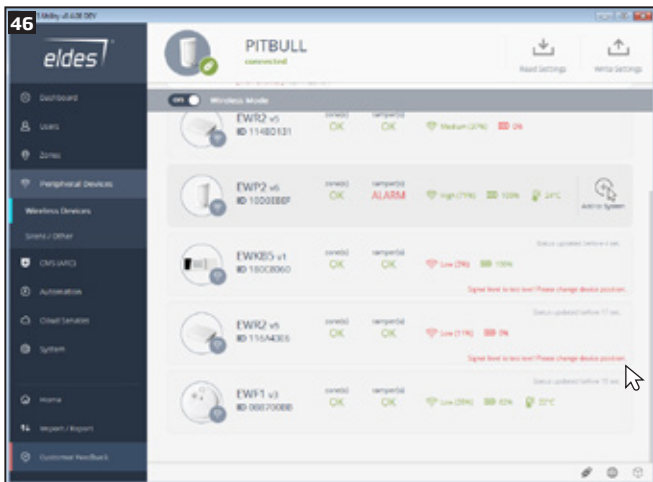
1. Turn on the wireless device by following the instructions provided in the user manual of the wireless device.
2. Run *Eldes Utility software*, plug-in USB cable into your device and PC (if you are using *Eldes Utility software* on a mobile device, then run your pre-installed app, plug-in OTG type USB cable into your PITBULL ALARM PRO (or PITBULL ALARM PRO -3G) device and you mobile device), wait until you will be addressed to the device's main configuration section, named *Dashboard*.
3. Next, select *Peripheral Devices* section and click on the **Enable** button in order to activate the system's wireless transmitter-receiver (*Wireless Mode*).



By default, this section uses a list view to show ELDES wireless devices visible to PITBULL ALARM PRO (or PITBULL ALARM PRO -3G) within its wireless signal range.



4. **List view:** Left-click on the *Add to system* button located next to the unpaired wireless device icon (filled in with a grey colour).



Unpaired devices are indicated by a wireless device icon filled in with a grey colour. Once the device is paired, the icon colour turns green:

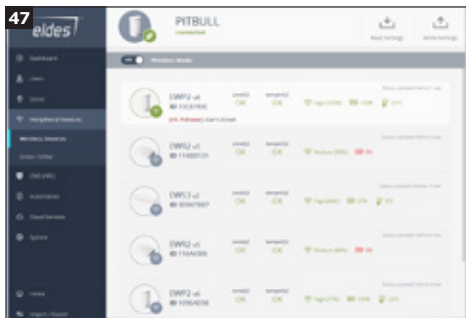


Wireless device paired to alarm system (icon filled in with a green colour).



Wireless device not paired to alarm system (icon filled in with a grey colour).

All those paired wireless devices are randomly arranged (i.e. NOT according to the strength of their wireless signal, expressed in percentage terms).



IMPORTANT for EWK2: After left-clicking on the *Add to system* button it is necessary to press any button on the EWK2 keyfob several times.

5. After the successful wireless device pairing process, the wireless device icon will turn green. In addition, the following information related to the paired wireless device will appear (see pic. No 46):

Device Type - Wireless device model, device's firmware version and wireless ID number (8 symbols).

Zone(s) - zone(s) status of the wireless device (OK/ALARM).

Tamper(s) - tamper(s) status of the wireless device (OK/ALARM).

Temperature - Temperature of the area surrounding the wireless device. The temperature is measured by built-in temperature sensor (if any).

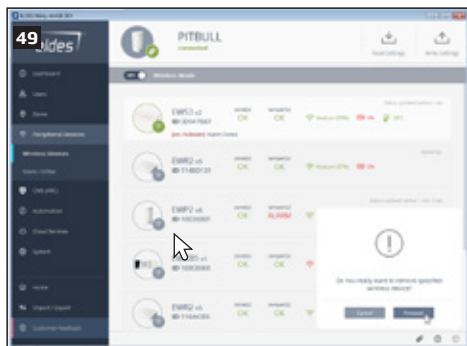
Battery Level - Battery status of the wireless device:

- 0% - Battery is empty;
- 100% - Battery is full.

Signal Level - Wireless connection signal strength:

- 0% - No wireless signal;
- 100% - Wireless signal is perfect.

Test Time (live status update) - The time period intended to test the wireless device battery status, signal strength and temperature of the area surrounding the wireless device. To change this parameter, left-click on the paired device position (once) and select *Configure device* option - there you will be able to change the default Test Time value. For more details regarding Test Time, please refer to section **3. HOW TO MANAGE THE WIRELESS DEVICES**.



4. After the successful wireless device removal process, the stripe above the wireless device icon will turn grey.





ATTENTION: In order to correctly remove the wireless device from the system, the user must restore the parameters of the wireless device to default afterwards. After remove from the system, wireless device needs to be reset in order to add it again to another/same system. Please seal off the battery of wireless device after removing it in order for it not to be drained out of power.

3.3. EKB3W/EWKB4 wireless keypad overview





ATTENTION: EKB3W/EWKB4 commands provided in this user manual are intended for basic control of the PITBULL ALARM PRO system. For complete configuration and control using EKB3W/EWKB4, please refer to section **4.HOW TO PROGRAM THE SYSTEM USING EKB3W/EWKB4 WIRELESS KEYPAD.**

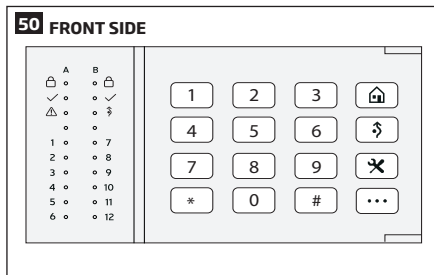
EKB3W/EWKB4 is a wireless LED keypad intended for using with PITBULL ALARM PRO (or PITBULL ALARM PRO -3G) alarm system.

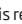
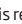
LED Functionality

	INDICATION	DESCRIPTION
 (red)	Steady ON	System armed / exit delay in progress
	Flashing	Configuration mode activated
 (green)	Steady ON	System is ready - no violated zones and/or violated tampers exist
 (orange)	Steady ON	System faults exist
	Flashing	Violated high-numbered zone
 (orange)	Steady ON	Violated zone bypassed
1-12 (red)	Steady ON	Zone violated / configuration command being typed in
	Flashing	Tamper violated

Keys Functionality

	DESCRIPTION
	1st character for STAY-arming
	1st character for violated zone bypass and bypassed zone activation
	1st character for Configuration mode activation or deactivation
	1st character for system fault list indication / 1st character for violated high-numbered zone indication / 1st character for violated tamper indication
0 - 9	Command typing
1 - 2	Keypad partition switch
*	Clear typed in characters
#	Typed in command confirmation



The illuminated indicator  indicates that the system is ready for arming. Indicator  lights up or flashes in case of zone violation or if system faults are present. The system can be armed even when the following faults are present:

- Backup battery problem;
- Mains power failure;
- Date and time not set;
- GSM connection problem.

Audio Indication

The built-in buzzer uses two types of sound signals - three short beeps and one long beep. Three short beeps stand for successfully carried out configuration command, one long beep - for invalid configuration command. In addition, the buzzer will continuously provide short beeps for 10 seconds (by default) in case of alarm when the violated zone or tamper is of the associated EKB3W/EWKB4 keypad.

Visual Indication

EKB3W/EWKB4 keys have a back-light and in case of alarm the keypad back-light turns on and lasts for 10 seconds (by default) if the violated zone or tamper is of the associated EKB3W/EWKB4 keypad. For battery power saving reasons the back-light and LED light lasts for 10 seconds after the last key-stroke. However, this duration is configurable.

3.3.1. Sleep mode, how to wake up EKB3W/EWKB4 and view system alarms or faults

Once EKB3W/EWKB4 is paired, it will attempt to exchange data with the system. The communication process follows this pattern:

Sleep mode. Due to battery power saving reasons, most of the time EKB3W/EWKB4 keypad operates in sleep mode and periodically (by default - every 240 seconds) transmits the supervision signal, identified as Test Time, to the alarm system. When the keypad operates in the sleep mode, only the transmitter remains operational, while the receiver as well as the LED indicators and the back-light are switched OFF. However, when the keypad transmits the supervision signal to the system, it will NOT activate its buzzer and/or the LED indicators.

How to wake up EKB3W/EWKB4 and view system alarms, faults. When any EKB3W/EWKB4 key is pressed, the keypad LED indicators and the back-light will activate for a set up period of time (by default - 10 seconds), identified as Back-light Timeout. During the Back-light Timeout, the Test Time will automatically switch to 2 seconds period allowing to indicate system alarms, faults and arm/disarm process on the EKB3W/EWKB4 keypad. The Back-light timeout will expire after 10 seconds (by default) of EKB3W/EWKB4 idling resulting in return to sleep mode. Meanwhile:

- if a zone or tamper, which is of the associated EKB3W/EWKB4 keypad, is violated, EKB3W/EWKB4 will instantly wake up and initiate the Back-light Timeout. Meanwhile the keypad buzzer will emit short beeps and the LED indicators will light ON indicating the violated zone or tamper number. This will happen **ONLY** if a zone attribute named **Bell** is enabled.
- if a zone or tamper, which is not of the associated EKB3W/EWKB4 keypad, is violated, EKB3W/EWKB4 keypad will NOT wake up and will NOT initiate the Back-light Timeout as well as the buzzer will NOT emit short beeps and the LED indicators will NOT light ON.

To configure Back-light Timeout and Test Time parameters, please refer to *Eldes Utility software*.

NOTE: If you have accidentally typed in an unnecessary character, please press [*] key or wait for 10 seconds until the keypad buzzer will provide a long beep indicating that the typed in characters have been cleared.

NOTE: To have exit and entry delay indication on the keypad, we highly recommend installing EKB3W/EWKB4 near the designated entrance/exit door and using EKB3W/EWKB4 zone for wired magnetic door contact connection.

3.3.2. How to configure and control the system by EKB3W/EWKB4

The system configuration and control by EKB3W/EWKB4 keypad is carried out by entering a valid configuration command using the number keys [0]-[9], [#] key for confirmation and [*] key to clear the characters that have been entered. Alternatively, the user can wait for 10 seconds until the keypad buzzer will provide a long beep indicating that the entered characters have been cleared. When typing in the characters, the indication of each pressed key is provided by short beep of keypad buzzer. Additionally, the red indicators light up when the number keys [0]-[9] are being pressed. Some commands require [A], [B], [X] and [C] keys as well. The structure of a standard configuration command is a combination of digits. The variables are provided in lower-case letters, while a valid parameter value range is provided in brackets.

3.3.3. How to arm the system by EKB3W/EWKB4

1. To arm the system, enter any out of 10 available 4-digit user codes using the number keys:




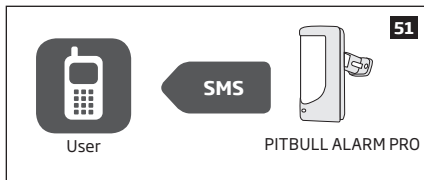
Enter user code:

UUUU

Value: uuuu - 4-digit user code

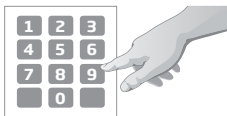
Example: 1111

2. The system will initiate the exit delay countdown (by default - 15 seconds) intended for user to leave the secured area. The countdown is indicated by short beeps provided by the mini-buzzer built in to the keypad.
3. After the system is successfully armed, the keypad's indicator  will light up and the system will reply with confirmation by SMS text message to User 1 phone number (by default).



3.3.4. How to disarm and turn off alarm by EKB3W/EWKB4

1. Upon violation of delay zone, the system will initiate the entry delay countdown (by default - 15 seconds) after the user has entered the secured area. The countdown is indicated by short beeps provided by the mini-buzzer built in to the keypad. Entry delay countdown is intended for user to enter a valid user code and disarm the system before the alarm is caused.
2. To disarm the system or turn off the alarm, enter any out of 10 available 4-digit user codes using the number keys:



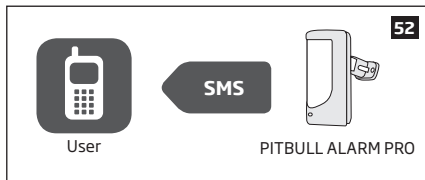
Enter user code:

UUUU

Value: uuuu - 4-digit user code

Example: 1111

3. After the system is successfully disarmed, indicator  will light off and the system will reply with confirmation by SMS text message to User 1 phone number (by default).




NOTE: If the user fails to enter a correct user/master code 10 times in a row, the system will block the keypad for 5 minutes. While the keypad is blocked, the system prevents from entering any user/master code. The keypad will automatically unblock once the 5-minute time has expired.

3.3.5. About STAY mode and how to activate it by EKB3W/EWKB4

Stay mode allows the user to arm and disarm the alarm system without leaving the secured area. If the zones with Stay attribute enabled are violated when the system is Stay-armed, no alarm will be caused. Typically, this feature is used when arming the system at home before going to bed.

The system can be Stay-armed under the following conditions:

- **Automatic** - If a Delay-type zone is NOT violated during exit delay and a zone (-s) with Stay attribute enabled exists, the system will arm in Stay mode. When arming the system in Stay mode under this condition, one of the available arming methods must be used that provide exit delay.
- **Manual** - The system will skip exit delay countdown and instantly arm in Stay mode when using EKB3W/EWKB4 keypad (see below).


1. Arm the system in Stay mode manually by entering the following combination using  and number keys:



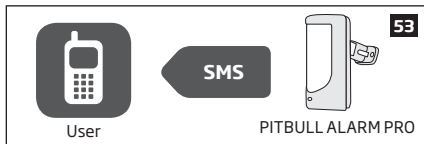
Press the  key and enter user code:

 uuuu

Value: uuuu - 4-digit user code

Example:  1111



2. After the system is successfully Stay-armed, the keypad's LED indicator  will light up and the system will reply with confirmation by SMS text message to User 1 phone number (by default).



For more details on how to disarm and turn off the alarm by EKB3W/EWKB4 keypad, please refer to section **3.3.4. How to disarm and turn off alarm by EKB3W/EWKB4.**

3.3.6. Alarm indications and how to view violated zones / tampers by EKB3W/EWKB4

EKB3W/EWKB4 keys have a LED back-light, which will be activated once any key is pressed. Due to battery power saving reasons, the back-light and LED light last for 10 seconds after the last key-stroke.

The violated zone number is indicated by illuminated zone indicator or flashing indicator  (if the violated zone number is above 12). The violated tamper number is indicated by flashing zone indicator or illuminated indicator  (if the violated tamper number is above 12). In both cases, the mini-buzzer can be silenced by disarming the system using any method.

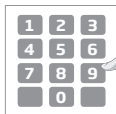
For more details on EKB3W/EWKB4 violated high-number zone and tamper number indication, please refer to section **3.3.8. Fault messages.**

The built-in buzzer uses two types of sound signals - three short beeps and one long beep. Three short beeps stand for successfully carried out configuration command, one long beep - for invalid configuration command. The buzzer emits short beeps during exit delay. Due to battery saving reasons the buzzer will beep during entry delay and in case of alarm only if the violated zone is of the associated EKB3W/EWKB4 keypad.

3.3.7. How to bypass a violated zone and activate a bypassed zone by EKB3W/EWKB4

Arming the system is disabled while there's at least 1 violated zone. Bypassing the zone allows to temporarily disable a particular violated zone and arm the alarm system afterwards.

Bypass a violated zone by entering the following combination using **⌘**, number and **#** keys:



Press the **⌘ key, enter zone number and user code:**

⌘ nn uuuu#

Value: *nn* – zone number, range – [01... 34]; *uuuu* – 4-digit user code

Example: **⌘ 051111#**


To activate a bypassed zone, enter the same combination again.

NOTE: The alternative way to activate all bypassed zones at once is to disarm the system.

NOTE: Zones can only be bypassed when the system is not armed.

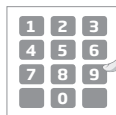
The Configuration mode must be deactivated, while bypassing and activating a bypassed zone.

3.3.8. Fault messages

1. Steady ON or flashing indicator  represents certain system faults. For more details, please refer to the following table below.

Indication	Description
Steady ON	One or more tampers are violated; other system faults (see below)
Flashing	One or more high-numbered zones (Z13-Z34) are violated (see below)

2. In order to find out more on a certain system fault, please enter the following command.



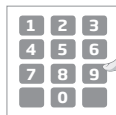
Press the ... and # key:

... #

After this procedure the keypad will illuminate red indicators for 15 seconds. The description of each indication is provided in the table below.

LED #	Description
1	Mains power is lost
2	Backup battery failed - requires replacement
7	One or more high-numbered tamper (Tamper 13 - Tamper 34) are violated
8	Date/time not set
9	One or more high-numbered zones (Z13-Z34) are violated (see step #3)
10	GSM connection is lost/SMS daily/monthly limit exceeded

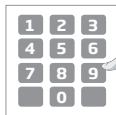
3. In order to find out the violated high-numbered zone, please enter the following command and refer to the table below.



Press the ... and 1 key:

... 1

4. In order to find out which particular tamper is violated, please enter the following command. In case there is a combination of flashing and illuminated red indicators on the keypad, please refer to the table below in order to find out the violated high-numbered tamper (Tamper 13 - 34).



Press the ... and 2 key:

... 2

The following table provides the combinations of red indicators belonging to a certain indicator section (A or B) on the keypad. The combination of the flashing red indicator in section A and illuminated (steady ON) red indicator in section B represents the respective number of a violated high-numbered zone or tamper.

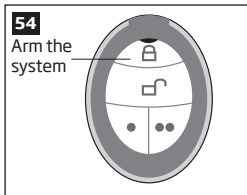
A (flashing)	B (steady ON)	LED #7	LED #8	LED #9	LED #10
LED #1		Z13	Z19	Z25	Z31
LED #2		Z14	Z20	Z26	Z32
LED #3		Z15	Z21	Z27	Z33
LED #4		Z16	Z22	Z28	Z34
LED #5		Z17	Z23	Z29	
LED #6		Z18	Z24	Z30	

3.4. EWK2 wireless keyfob overview

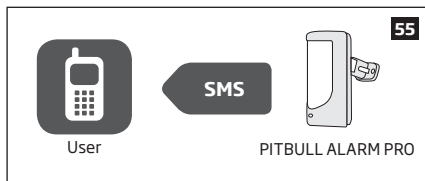
EWK2 is a wireless keyfob intended for using with PITBULL ALARM PRO (or PITBULL ALARM PRO -3G) alarm system. EWK2 keyfob features four configurable buttons intended to operate according to individual needs. After the button is pressed, EWK2 internal buzzer's sound signal (and red indicator; on EWK2 only) confirms a successfully carried out command. The status of the sent command can be checked by attempting to receive the feedback signal from the alarm system. This can be performed by pressing down the same button and holding it for 3 seconds. 3 short sound signals indicate a successfully carried out command while 1 long beep stands for failed command and feedback signal failure. By default one pair of buttons is already configured to arm and disarm the alarm system.

3.4.1. How to arm the system by EWK2

1. To arm the system, press 1 of 4 keyfob buttons set to arm the system (by default, EWK 2 - ).

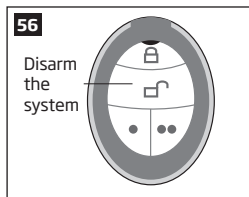


2. The system will initiate the exit delay countdown (by default - 15 seconds) intended for user to leave the secured area. The countdown is indicated by short beeps provided by the mini- buzzer built in to the keypad.
3. After the system is successfully armed, it will reply with confirmation by SMS message to User 1 phone number (by default).

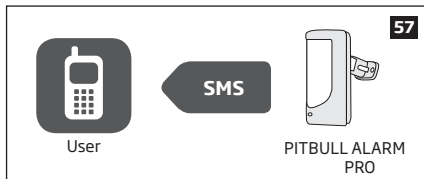


3.4.2. How to disarm and turn off alarm by EWK2

1. The system will instantly disarm (without any delay).
2. To disarm the system, press 1 of 4 keyfob buttons set to disarm the system (by default, EWK2 -).



3. After the system is successfully disarmed, it will reply with confirmation by SMS message to User 1 phone number (by default).



3.4.3. About STAY mode and how to activate it by EWK2

Stay mode allows the user to arm and disarm the alarm system without leaving the secured area. If the zones with Stay attribute enabled are violated when the system is Stay-armed, no alarm will be caused. Typically, this feature is used when arming the system at home before going to bed.

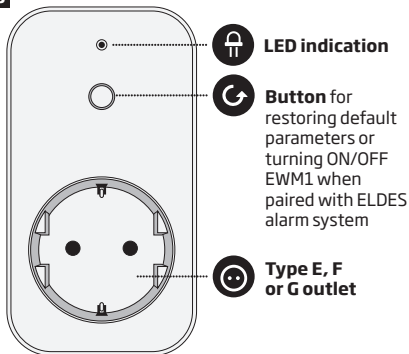
**Arm/disarm the
system in
Stay mode**

EWK2

This operation may be carried out from the wireless key-fob if pre-assigned using the PC running ELDES Utility software.

3.5. EWM1 - Wireless Power Socket

58



Main features:

- Control your household equipment remotely by wireless keyfob, keypad, SMS commands or ELDES Cloud Services
- Compatible with any 230V electrical appliance
- View real-time, daily and monthly power consumption report
- Fault indication and protection: circuit thermal, overvoltage, overcurrent, undervoltage, relay fault indication.

EWM1 is a wireless device intended to expand ELDES alarm system capabilities by providing a wireless connection access to any 230V electrical appliance, such as lights, air-conditioner, watering equipment etc. By plugging the appliance into the electrical outlet of EWM1, the user gains a possibility to control it by wireless keyfob, keypad, SMS command or ELDES Cloud Services. EWM1 lets you monitor the power consumption and view the reports. For safety and protection purposes, EWM1 will prevent from powering up the electrical appliance if certain fault conditions are present. In order to start using EWM1, it has to be paired with ELDES alarm system using *Eldes Utility software* or by sending a corresponding SMS text message to ELDES alarm system.

It is possible to pair up to 16 EWM1 devices with the system at a time. The maximum wireless connection range is up to 3000m (9842.5ft) in open areas.

For more details on technical specifications and installation, please refer to the latest user manual of the device located at www.eldesalarms.com

To monitor real-time power consumption value, view today's or monthly power consumption reports or reset the power consumption counter, please refer to the following configuration methods.

View power consumption reports

SMS

SMS text message content:

`ssss_EWM1INFO`

Value: ssss - 4-digit SMS password.

Example: 1111_EWM1INFO

ElDES Utility
software

This operation may be carried out from the PC using the *ELDES Utility software*.

Reset power consumption counter for individual EWM1 device

SMS

SMS text message content:

`ssss_EWM1RESET:out-name`

Value: ssss - 4-digit SMS password; *out-name* - PGM output name associated with a certain EWM1 device.

Example: 1111_EWM1RESET:Controll14

ElDES Utility
software

This operation may be carried out from the PC using the *ELDES Utility software*.

Reset power consumption counter for all EWM1 devices simultaneously

SMS

SMS text message content:

`ssss_EWM1RESET:ALL`

Value: ssss - 4-digit SMS password.

Example: 1111_EWM1RESET:ALL

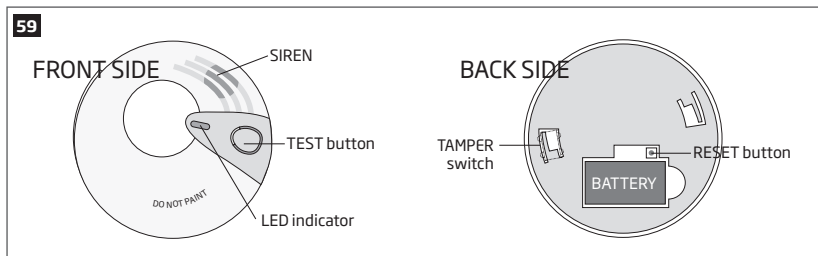
NOTE: Real-time power consumption value is NOT included in the power consumption report requested by SMS text message.

3.6. EWF1/EWF1CO - Wireless Smoke/CO Detector

Main features:

- Photoelectric sensor for slow smouldering fires
- TEST button
- Non-radioactive technology for environmental friendly
- High and stable sensitivity
- Quick fix mounting plate for easy installation
- LED operation indicator
- Built-in speaker for audio alarm indication
- Auto-reset when smoke/CO clears

For more details on technical specifications and installation, please refer to the latest user manual of the device located at www.eldesalarms.com



3.7. EWKB5 Wireless Touchpad Overview

EWKB5 is a wireless accessory equipped with a 4.3" true-colour touch screen and compatible with PITBULL ALARM PRO (or PITBULL ALARM PRO -3G) alarm system.

Device features:

- Arming and disarming
- Violated zone bypass and bypassed zone activation
- PGM output control
- Customizable user-friendly graphical menu
- Navigation through the menu using the touch screen
- Multilingual voice-guided audio instructions
- Adjustable brightness and volume level
- Battery or externally-powered
- Add/delete/edit username and user/master code PIN (accessible from the User's menu)

EWKB5 has 1 built-in zone terminal, which is by default designed for passive wired digital sensor connection, such as magnetic door contact, and 2 tamper switches for enclosure state supervision in case it is illegally opened or detached from the wall. Regardless if the tamper switch alone is to be used, the zone must be enabled and the resistor of 5,6k Ω nominal must be connected across Z1 and COM connectors. It is possible to connect up to 2 EWKB5 devices to the alarm system PITBULL ALARM PRO (or PITBULL ALARM PRO -3G). The maximum wireless connection range is 1000m (~3280ft) (in open areas).

Main menu features:

Partition button - arms/disarms the system once a valid master/user code is entered; indicates partition status (armed/disarmed), presence of system faults.

Quick arm button - arms the system by touching and holding this button; master/user code not required (customizable, hidden by default; not shown in picture).

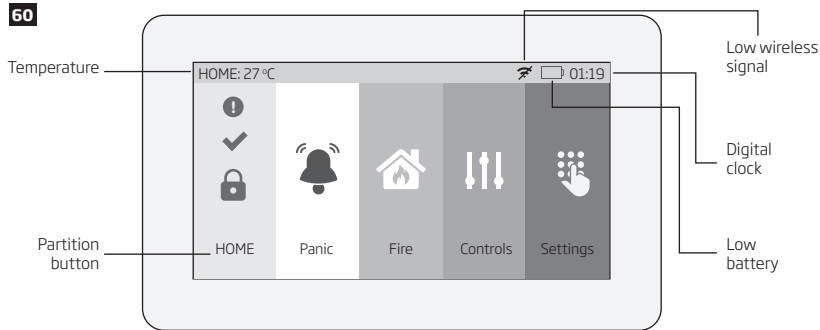
Bypass - the Bypass icon will be shown on the main screen if any bypassed zone is present.

Fire - instantly causes fire alarm by pressing and holding this button (customizable, hidden by default).

Panic - instantly causes silent alarm by pressing and holding this button (customizable, hidden by default).

Controls - opens PGM output menu, thus letting you turn a certain PGM output ON or OFF (customizable, hidden by default).

Settings - grants access to settings menu once a valid master code is entered.



Dashboard features:

- Low wireless signal - appears when the wireless signal strength (between EWKB5 and alarm system) drops below 30%.
- Low battery - appears when the battery power drops below 5%.
- Temperature - measured by a built-in PITBULL ALARM PRO (or PITBULL ALARM PRO -3G) temperature sensor or a wireless device paired with the system (customizable, disabled and hidden by default)
- Digital clock - displays system's current time.

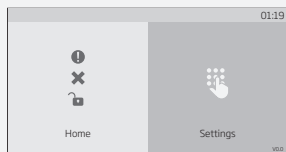
3.7.1.Sleep mode and how to wake up EWKB5

Once EWKB5 is paired, it will attempt to exchange data with the system. The communication process follows this pattern:

Sleep mode. Due to battery power saving reasons, most of the time EWKB5 touchpad operates in sleep mode and periodically (by default - every 30 seconds) transmits the supervision signal, identified as Test Time, to the PITBULL ALARM PRO (or PITBULL ALARM PRO -3G) system. When the touchpad operates in the sleep mode, the LCD display is switched OFF, but the touchpad permanently stays alert in case of alarm event. However, when the touchpad transmits the supervision signal to the system, it will NOT activate the LCD display.

How to wake up EWKB5.

61



The touchpad will instantly wake up and activate the LCD display under the following conditions:

- when the user slide his finger across the LCD display.
- in the event of any type of alarm while the partition is being armed.
- in the event of fire alarm, regardless of the system status - armed or disarmed.
- while entry delay countdown is in progress.

NOTE: It is highly recommended installing EWKB5 near the designated entrance/exit door and using EWKB5 zone for wired magnetic door contact connection.

3.7.2. How to configure and control the system by EWKB5

The system configuration and control by EWKB5 touchpad is carried out using simple, yet powerful graphical menu displayed on the touch screen. For user-friendly experience, the device supports voice-guided audio instructions. Additionally, the main menu buttons and dashboard (top bar) are customizable, thus enabling the user to arrange the components in any way he/she wants.

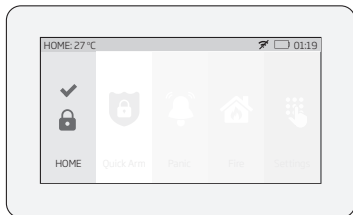
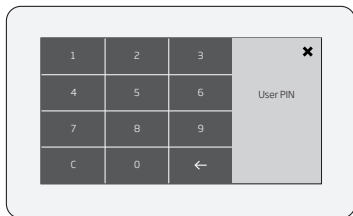
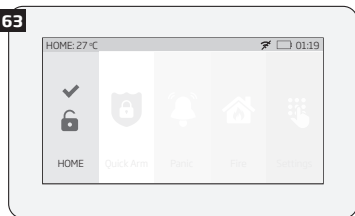
To navigate through the menu, touch the desired main menu button representing a certain action or menu section. To enter a required value, use the on-screen keyboard automatically appearing when necessary. Typically, the configuration of the system by EWKB5 touchpad is carried out by accessing the Login menu secured with the master code.

3.7.3. How to arm the system by EWKB5

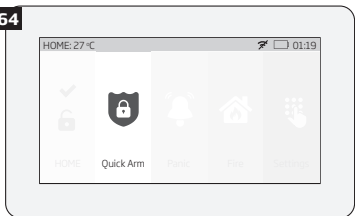
1. To arm the system, touch the Partition button and enter a valid 4-digit user/master code using the on-screen numpad. Alternatively, the user can touch and hold the Quick Arm button in order to arm the system without entering the user code. However, both methods require the user/master code in order to disarm the system.

2. The system will initiate the exit delay countdown (by default - 15 seconds) intended for user to leave the secured premises. The countdown initiation will be indicated by voice-guided instructions followed by short beeps emitted by the touchpad.

63



64



3. Once the system is successfully armed, the touchpad will display icon on the Partition button followed by SMS text message confirmation delivered to the listed user phone number (by default).

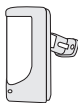
65



User



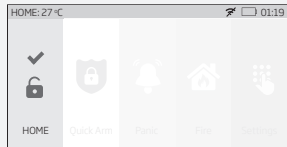
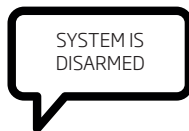
SMS

PITBULL ALARM
PRO

3.7.4. How to disarm and turn off alarm by EWKB5

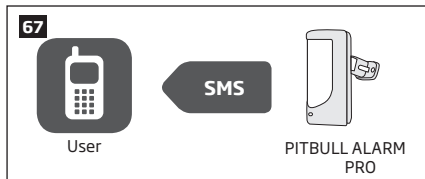
1. The system will initiate the entry delay countdown (by default - 15 seconds) after the user has entered the secured premises. Entry delay countdown is intended for user to enter a valid user code and disarm the system before the alarm is caused.
2. To disarm the system and/or turn off the alarm, enter a valid 4-digit user/master code using the on-screen numpad.

66



3. Once the system is successfully disarmed, the icon displayed on the Partition button will turn to  followed by

SMS text message confirmation delivered to the listed phone number (by default).



NOTE: If the user fails to enter a correct user/master code 10 times in a row, the system will block the touchpad for 2 minutes. While the touchpad is blocked, the system prevents from entering any user/master code. The touchpad will automatically unblock once the 2-minute time has expired.

3.7.5. About STAY mode and how to activate it by EWKB5

Stay mode allows the user to arm and disarm the alarm system without leaving the secured premises. Typically, this feature is used when arming the system at home before going to bed.

The system can be Stay-armed using EWKB5 under the following condition:

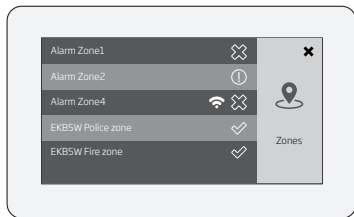
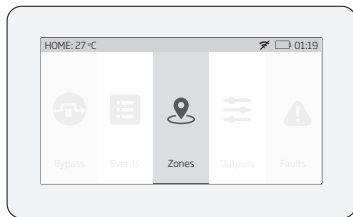
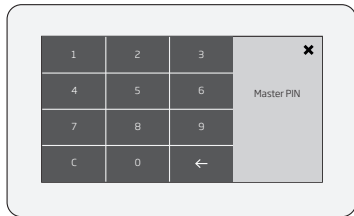
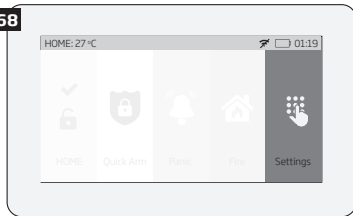
Automatic - If a Delay-type zone with Stay attribute enabled exists and it is NOT violated during the exit delay countdown, the system will arm in Stay mode. Once the system is successfully Stay-armed, the icon will be indicated on the Partition button.

For more details on how to disarm and turn off the alarm by EWKB5 touchpad, please refer to section How to disarm the system and turn OFF alarm by EWKB5.

3.7.6. Alarm indications and how to view violated zones / tamperers by EWKB5

The icon displayed on the Partition button indicates that no violated zones and/or tamperers are present, therefore the partition is ready for arming. If the icon is displayed instead, the partition is not ready for arming, therefore the user must restore all violated zones before arming the partition. Alternatively, the violated zones and violated tamperers associated with the zone can be bypassed (see How to bypass a violated zone and activate a bypassed zone by EWKB5) or a Force attribute enabled for a certain zone (resulting in partial arm; see Zone attributes). The icon displayed on the Partition button represents all types of alarm, except tamper and fire alarm, while the icon represents fire alarm exclusively. In case of system fault presence, including tamper violation, the icon will appear on the Partition button (see section 3.7.11. Fault messages).

To view the list of violated zones and/or violated tamperers associated with certain zones, please open Zones section by navigating through the menu as follows. Please, note that Master code is required for this action.



The following Zones section icons represent the state of a certain zone/tamper:

✓ - zone/tamper is OK - not violated.

✗ - zone is violated.

📍 - tamper associated with a corresponding zone is

violated.

📶 - zone of wireless category.

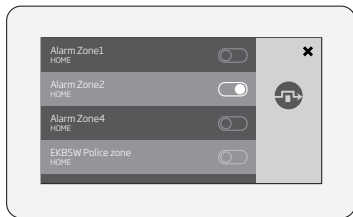
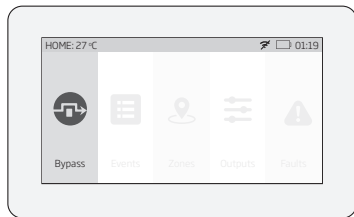
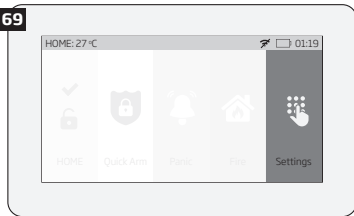
🔋 - LOW battery of the corresponding zones sensor

3.7.7. How to bypass a violated zone and activate a bypassed zone by EWKBS

Arming the system is disabled while there's at least 1 violated zone. Bypassing the zone allows to temporally disable a particular violated zone and arm the alarm system afterwards.

In case the user attempts to arm the system, while a violated zone/tamper exists, the touchpad will automatically re-direct the user to the Master-code-secured Bypass section, which lists the violated zones/tampers, and deny system arming unless the violated zone/tamper is bypassed. Alternatively, the user can navigate through the menu as indicated below.

1. To bypass a certain zone and the tamper associated with the zone, please slide the appropriate switch to the right.
2. To activate a bypassed zone, navigate through the aforementioned menu path and slide the bypassed zone's switch to the left.



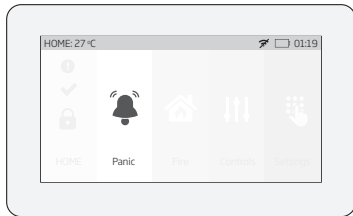
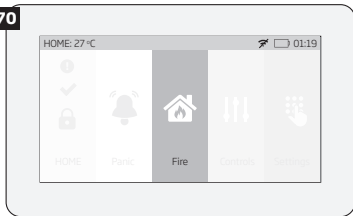
NOTE: Zones can only be bypassed when the system is not armed.

The Configuration mode must be deactivated, while bypassing and activating a bypassed zone.

3.7.8. How to manually trigger panic or fire alarm by EWKB5

In the event of emergency, the user might be able to manually trigger the fire and panic alarm using EWKB5. By default the Fire and Panic buttons are disabled, therefore they must be enabled under the Settings section beforehand.

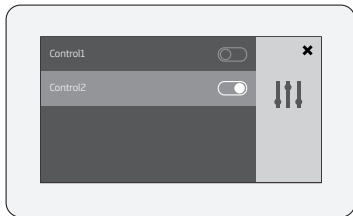
To trigger fire or panic alarm, please touch and hold the Fire or Panic button respectively. This action will be followed by a voice message "Fire signal has been sent" and "Alarm signal has been sent" respectively. No user/master code is required for this action.





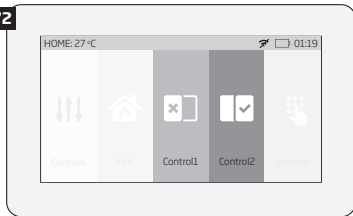
3.7.9. How to control PGM outputs by EWKB5

Using EWKB5, user can remotely control the electric appliances linked to the PGM outputs of the associated wireless devices. The available PGM outputs are listed under the Controls button menu. By default the Controls button is disabled, therefore it must be enabled under the *Advanced* section beforehand. Alternatively, the user can enable an individual button for each available PGM output in order to control it directly from the main menu. The button title reflects the PGM output name that can be changed using Eldes Utility software.

A. To turn a PGM output ON, touch the Controls button (path: Master menu -> Advanced -> Quick menu) in order to access the list of available PGM outputs and slide the switch of a certain PGM output to the right. Sliding the switch to the left will turn OFF the PGM output. No code is required for these actions..



B. To turn a PGM output ON by a single touch, please touch the corresponding PGM output button. Notice the icon displayed on the button changing from  (represents PGM output's OFF state) to  (represents PGM output's ON state). Touching the button again will turn OFF the PGM output. No code is required for these actions.

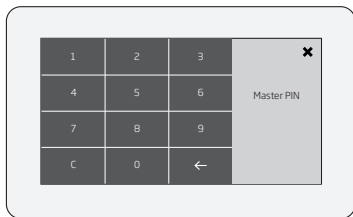
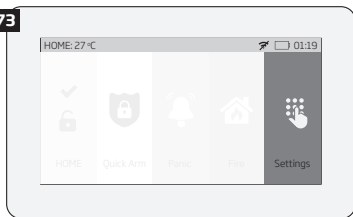


NOTE: If you do not wish to display either the Controls button or individual PGM output button in the main menu due to the security reasons, you can alternatively access the Controls menu under the Login menu secured with Master code.

3.7.10. How to view event log using EWKB5

The event log feature allows the system to chronologically register the records regarding certain system events, such as alarms, arm/disarm events etc. Using EWKB5 the user can view the complete event log.

To view the event log, please navigate through the menu as follows. Please, note that this action requires Master code.





For more details on event log feature, please refer to section **7.14. Event Log**

3.7.11. User's menu

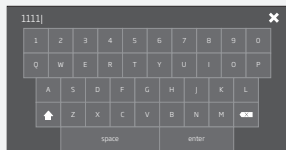
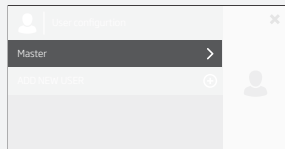
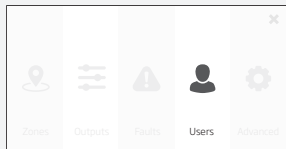
Using EWKB5 , it is possible to add new users and configure which partitions the newly added user can control. The option to add a new user is listed under the Users button menu. To add a new user, please navigate through the menu as follows. Please, note that this action requires Master PIN code (only for the entrance to Settings menu).



3.7.12. Master's menu

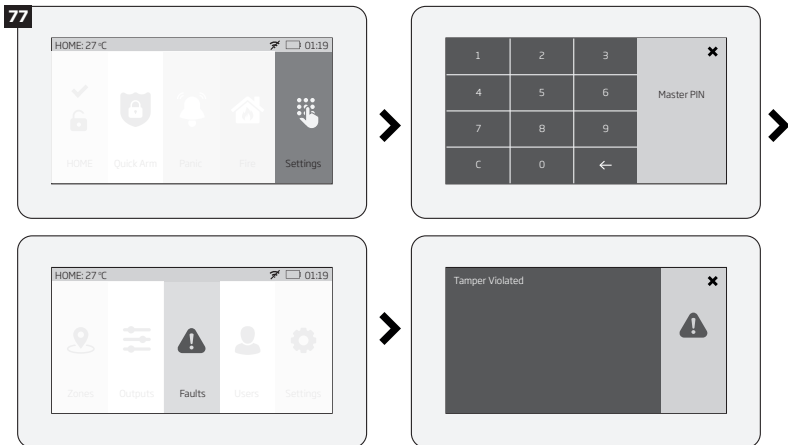
Using EWKB5 , it is possible to: edit Master settings, change Master name and Master PIN code; manage Partitions; delete selected users.

76



3.7.13. Fault messages

! icon displayed on the Partition button indicates the presence of certain system faults. To view a detailed list of the currently present system faults, please navigate through the menu as follows. Please, note that Master code is required for this action.



A more detailed description of each system fault is provided in the table below.

Message	Description
MAIN POWER LOST	Mains power is lost
LOW BATTERY	Low backup battery power - backup battery voltage is 8V or lower
BAD BATTERY	Backup battery requires replacement - backup battery resistance is 2,5Ω or higher
RF JAMMER DETECTED	Wireless signal is blocked by jammer
TAMPER VIOLATED	One or more tampers are violated
DATE/TIME NOT SET	Date/time not set
GSM FAILURE	GSM connection is lost

WIRELESS COMMUNICATION FAILURE	Wireless connection with a certain (all) wireless device is lost for 20 minutes or longer
EWM1 FAULT	One or more EWM1 device faults exist - enter this menu item to view the existing EWM1 device faults.
COMMUNICATION TO MS FAILED	In case the system ends up with all unsuccessful attempts by all connections to deliver data message to the monitoring station.

In order to find out which particular tamper is violated, please open the Master-code-secured Zones section by navigating through the menu as follows.

3.7.14. Advanced

The availability of additional configuration on EWKB5 touchpad screen depends on user's selection. Once the user wakes the touchpad up, enters to the Main menu and slides his finger across the LCD display, there he'll see the button "Advanced". When the user click on that button, the additional menu will open up and from there on the user will be able to check or configure the following:

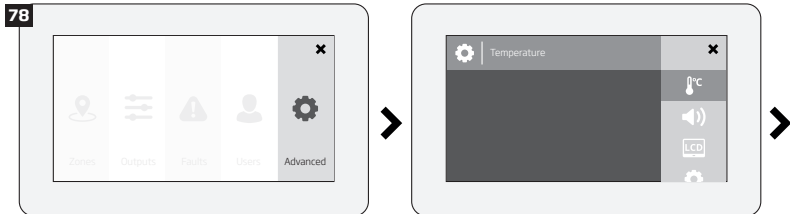
Temperature - indicates the current temperature of the secured area premises, monitored by the alarm system's temperature sensor.

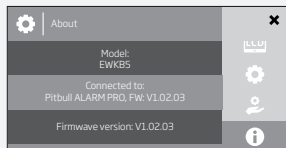
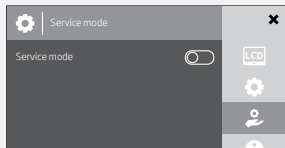
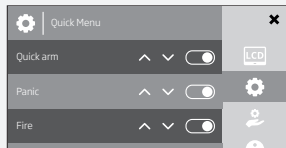
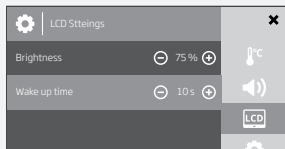
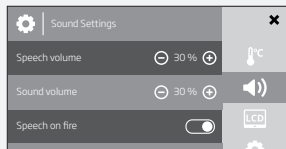
Sound settings - allows to change various sound settings of the EWKB5 (to increase/decrease speech or sound volume, to enable speech in case of fire alarm, etc.)

LCD settings - allows to change EWKB5 screen's wake up and brightness settings.

Quick menu - allows to select those necessary options (menu buttons), which will be shown on the main screen of EWKB5. Arrows (directed up and down) offers to re-order the current layout of menu buttons. Service Mode - this mode should be used when it is necessary to re-install some of the peripheral devices (to change batteries, open/close enclosure and etc.) or make other installation changes. In this mode, system does not check for tamper faults so it won't start siren alarm.

About - section of additional information about the touchpad model, alarm system model, hardware and firmware.





4. HOW TO PROGRAM THE SYSTEM USING YOUR MOBILE PHONE

NOTE: The system supports a flexible SMS text message management replies.

In order to configure and control the alarm system using SMS text message, send the text command to the phone number of PITBULL ALARM PRO (or PITBULL ALARM PRO -3G) from one of the pre-programmed user numbers.

ESSENTIAL INFORMATION FOR PROGRAMMING VIA YOUR MOBILE PHONE

- The underscore symbol '_' in these instructions represents a space. So when following instructions and typing an SMS text message, replace the underscore symbol with a single space.
- Similarly, 'XXXX' means password.
- Make sure you don't leave any spaces at the beginning or end of the message.
- If you receive the message "wrong syntax" please check your message and try again.

Main Settings			
Function	Command	Value Range / Comment	Example
Change the SMS password	0000_PSW_XXXX	XXXX = [0001... 9999] All SMS text message commands start with a password, so be sure to change the default password to a memorable number. It must be a four digit number - anything except four zeros. Non-numerical characters such as dots, colons and spaces are not allowed.	0000_PSW_1111
Add or change a single user phone number	XXXX_NRn: +441700YYYY111 or XXXX_NRn: 00441700YYYY111 or XXXX_ NRn:01700YYYY111	NRn = [NR1... NR10] The PITBULL ALARM PRO (or PITBULL ALARM PRO -3G) alarm system allows you to enter up to ten different mobile numbers to gain access to and control the system. User 1 number is mandatory - all the others can be skipped. All numbers must be entered in one of the following formats: <ul style="list-style-type: none">• International (with plus) - The phone numbers starting with plus and an international country code in the following format: +[international code][area	1111_NR1: +44321YYYY4

NOTE: The underscore symbol '_' in these instructions represents a space. So when typing an SMS text message, replace the underscore symbol with a single space.

Main Settings

Function	Command	Value Range / Comment	Example
		<p>code] [local number], example for UK: +441709YYYY111.</p> <ul style="list-style-type: none"> International (with 00) - The phone numbers starting with 00 and an international country code in the following format: 00[international code][area code][local number], example for UK: 00441709YYYY111. Local - The phone numbers starting with an area code in the following format: [area code][local number], example for UK: 01700YYYY111. 	
Add or change multiple user phone numbers	XXXX_ NR1:441700YYYY111_ NR2:00441700YYYY112_ NR3:0111YYYY3_ NR4:0111YYYY4_ NR5:0044111YYYY5_ NR10:+44111YYYY0	Enter numbers based on priority, because in case of alert, the system will attempt to contact the first number entered before the second and so on.	1111_NR1: +4432YYYY341_NR4: 0321YYYY52
Verify added user phone numbers	XXXX_HELPNR	The system will send you a text in return, with all pre-programmed numbers.	1111_HELPNR
Delete a single user phone number	XXXX_NRn:DEL	NRn = [NR1... NR10]	1111_NR2:DEL
Delete multiple user phone numbers	XXXX_NR2:DEL_NR3: DEL_NR4:DEL_NR5:DEL NR10:DEL		1111_NR3:DEL_ NR4:DEL_NR5:DEL

NOTE: A combination of different phone number formats is allowed to use.

NOTE: The underscore symbol '_' in these instructions represents a space. So when typing an SMS text message, replace the underscore symbol with a single space.

Main Settings

Function	Command	Value Range / Comment	Example
Set date and time	XXXX_MMMM.mn.dd_ hh:mi	MMMM = year; mn = month, [01... 12]; dd = day, [01... 31]; hh = hour, [00... 23]; mi = minutes, [00... 59]	1111_2012.05.25_ 14:15
Arm the system	XXXX_ARM	The system will send you a text confirmation in return.	1111_ARM
Disarm the system	XXXX_DISARM	The system will send you a text confirmation in return.	1111_DISARM
Change the exit delay timer	XXXX_EXITDELAY:YY	YY = [0... 600] value is in seconds When you exit your protected building, having just armed the system, you have to leave within a specified time to avoid activating the alarm. (the manufacturer pre-set default is 15 seconds). During this time, the detector will ignore any motion. This period is called the exit delay. By default, while the time-out is running, the LED will blink once a second.	1111_EXITDELAY:20
Disable the exit delay timer	XXXX_EXITDELAY:0		1111_EXITDELAY:0

NOTE: The underscore symbol ‘_’ in these instructions represents a space. So when typing an SMS text message, replace the underscore symbol with a single space.

Zone Settings

Function	Command	Value Range / Comment	Example
Edit zone alarm text	XXXX_Zn: NewTextHere	Zn = [Z1... Z34]	1111_Z1: Motion_detected
Disable a zone	XXXX_Zn:OFF	Zn = [Z1... Z34]	1111_Z5:OFF
Enable a zone	XXXX_Zn:ON	Zn = [Z1... Z34]	1111_Z7:ON
Change the entry delay timer	XXXX_ ENTRYDELAY:n,YY	n = [Z1... Z34], YY = [0... 65535] value is in seconds When you enter your protected building, you have to disarm the system within a specified time to avoid activating the alarm (manufacturer preset default is 15 seconds). During this time the detector will ignore any motion. This period is called entry delay. By default, while the time-out is running, the LED will blink once a second.	1111_ENTRYDE- LAY:1,25
Disable the entry delay timer	XXXX_ ENTRYDELAY:Zn,0	Zn = [Z1... Z34]	1111_ ENTRYDELAY:Z5,0
Check your system and zone status	XXXX_STATUS	The system will reply to the user who sent the SMS text message, with the following up-to-date information: <ul style="list-style-type: none"> • System status (armed/disarmed); • Status of zones and PGM outputs (ON/OFF); • Zone alarm texts; • PGM output names. 	1111_STATUS

PGM Output Settings**

Function	Command	Value Range / Comment	Example
Rename PGM output	XXXX_Cn:NewNameHere	Cn = [C1... C32]	1111_C2:Pump
Turn ON PGM output / set PGM output startup status to ON	XXXX_Cn:ON or XXXX_ OutputName:ON	Cn = [C1... C32]	1111_Pump:ON

NOTE: The underscore symbol '_' in these instructions represents a space. So when typing an SMS text message, replace the underscore symbol with a single space.

PGM Output Settings**

Turn OFF PGM output / set PGM output startup status to OFF	XXXX_Cn:OFF or XXXX_OutputName:OFF	Cn = [C1... C32]	1111_C3:OFF
Turn ON PGM output for a specified time period	XXXX_Cn:ON:HH.MM.SS or XXXX_OutputName:ON:HH.MM.SS	Cn = [C1... C32]; HH = hour, [00... 23]; MM = minutes, [00... 59]; SS = seconds, [00... 59]	1111_C3:ON: 13.23.48
Turn OFF PGM output for a specified time period	XXXX_Cn:OFF:HH.MM.SS or XXXX_OutputName:OFF:HH.MM.SS	Cn = [C1... C32]; HH = hour, [00... 23]; MM = minutes, [00... 59]; SS = seconds, [00... 59]	1111_Pump:OFF: 15.20.01

** - The PITBULL ALARM PRO (and PITBULL ALARM PRO -3G) system supports wireless PGM outputs allowing connection and control of various electrical appliances: water pumps, heating, lighting, blinds etc. The maximum number of PGM wireless outputs which can be connected to the alarm system is 32.

Alarm Duration Settings

Function	Command	Value Range / Comment	Example
Change system alarm duration	XXXX_SIREN:T	T = [0... 5] value is in minutes	1111_SIREN:4
Check system alarm duration	XXXX_SIREN	The system will reply to the user who sent the SMS text message, with the current alarm duration set	1111_SIREN

System Status Information

Function	Command	Value Range / Comment	Example
Check the status of your system	XXXX_INFO	The system will reply to the user who sent the SMS text message, with the following up-to-date information: <ul style="list-style-type: none"> • System date and time; • System status (armed/disarmed); • GSM signal strength level; • Mains power status; • State of zones (OK/alarm). 	1111_INFO

NOTE: The underscore symbol '_' in these instructions represents a space. So when typing an SMS text message, replace the underscore symbol with a single space.

System Status Information			
Function	Command	Value Range / Comment	Example
Set the periodic system status SMS text message	XXXX_INFO:FF.TT	FF = frequency in days, [01... 10]; TT = time, [01... 23] By default, this status SMS text message will be sent daily at 11:00am.	1111_INFO:02.10 This status SMS text message will be sent every 2nd day at 10:00am.
Disable periodic system status SMS text message	XXXX_INFO:00.00		1111_INFO:00.00

Alarm Notification Settings			
Function	Command	Value Range / Comment	Example
Disable ring from the system in case of alarm	XXXX_CALLS:OFF	By default the system makes a phone call to the User 1 number in the event of an alarm. You may wish to configure the system so that a phone call is NOT made when an alarm occurs (you may prefer to receive only SMS notifications).	1111_CALLS:OFF
Enable ring from the system in case of alarm	XXXX_CALLS:ON		1111_CALLS:ON
Disable SMS text message from the system in case of alarm	XXXX_SMS:OFF	The system sends an SMS text message to the User 1 number in the event of an alarm. You may wish to configure the system to cease sending these messages when alarm occurs.	1111_SMS:OFF
Enable SMS text message from the system in case of alarm	XXXX_SMS:ON		1111_SMS:ON

NOTE: The underscore symbol '_' in these instructions represents a space. So when typing an SMS text message, replace the underscore symbol with a single space.

Alarm Notification Settings

Function	Command	Value Range / Comment	Example
Enable SMS to all users simultaneously in case of alarm	XXXX_SMSALL:ON	By default, in case of alarm the system sends an SMS message to User 1. If the system does not receive a successful SMS message delivery confirmation in 20 seconds from the recipient, the SMS message is sent to User 2, and if there is still no delivery confirmation received, to Users 3, 4 and 5, but the sequence will stop as soon as a delivery confirmation is received. You may wish to configure the system to send these messages to all pre-programmed user numbers simultaneously when alarm occurs.	1111_SMSALL:ON
Disable SMS text message to all users simultaneously in case of alarm	XXXX_SMSALL:OFF		1111_SMSALL:OFF

External Power Supply and Backup Battery Status Notification Settings

Function	Command	Value Range / Comment	Example
Disable SMS text message regarding the external power supply	XXXX_M:OFF	The PITBULL ALARM PRO (or PITBULL ALARM PRO -3G) will let you know when the mains 230V power supply fails or recovers. In some remote places where the mains power supply is unreliable, you may wish to configure the system to ignore these changes. This command applies to User 1 only.	1111_M:OFF
Enable SMS text message regarding the external power supply	XXXX_M:ON		1111_M:ON
Disable SMS text message regarding the battery replacement	XXXX_BATREPORT:OFF	The system checks the backup battery resistance every 10 days. If the backup battery is disconnected or needs to be replaced (if more than 2,5Ω resistance is detected), the system sends an SMS message to User 1. You may wish to configure the system to ignore these changes.	1111_BATREPORT:OFF

External Power Supply and Backup Battery Status Notification Settings

Function	Command	Value Range / Comment	Example
Enable SMS text message regarding the battery replacement	XXXX_BATREPORT:ON		1111_BATREPORT:ON

Temperature Notification Settings

Function	Command	Value Range / Comment	Example
Set temperature MIN and MAX values	XXXX_TEMP:MIN:MAX	MIN = minimum temperature threshold, [-10... 40] C; MAX = maximum temperature threshold, [-10... 40] C.	1111_TEMP:-10:30
Check the temperature	XXXX_TEMP	The system will reply to the user who sent the SMS text message, with the temperature value measured by the pre-selected (using <i>Eldes Utility software</i>) temperature sensor.	1111_TEMP

System Control from Any Phone Number Settings

Function	Command	Value Range / Comment	Example
Unblock unknown incoming numbers	XXXX_STR:ON	By default, the alarm system can only be accessed from each of up to ten mobile phones that you program into it. To allow access from any phone number you need to enable the current feature, which will allow all password holders to access the system.	1111_STR:ON
Block unknown incoming numbers	XXXX_STR:OFF		1111_STR:OFF

NOTE: The underscore symbol '_' in these instructions represents a space. So when typing an SMS text message, replace the underscore symbol with a single space.

Function	Command	Value Range / Comment	Example

Detector Sensitivity Level Settings			
Function	Command	Value Range / Comment	Example
Change the sensitivity level of the detector	XXXX_LEVEL:YY	YY = [20... 200] The greater the value, the lower the sensitivity level of the detector. The alarm system is pre-set by the manufacturer at the optimal detector sensitivity level. However, in some cases, for instance where the system is installed in windy premises, the air flow can cause false alarms. In this case you can reduce the sensitivity level.	1111_LEVEL:35
Check the sensitivity level of the detector	XXXX_LEVEL		1111_LEVEL

Wireless Device Management			
Function	Command	Value Range / Comment	Example
Disable wireless module	XXXX_RF:OFF	The system disables the built-in wireless module	1111_RF:OFF

NOTE: The underscore symbol ‘_’ in these instructions represents a space. So when typing an SMS text message, replace the underscore symbol with a single space.

Wireless Device Management			
Function	Command	Value Range / Comment	Example
Enable wireless module	XXXX_RF:ON		1111_RF:ON
Pair a wireless device to the system	XXXX_SET:YYYYYYYY	YYYYYYYY = 8-character wireless device ID code	1111_SET:5261841A
Remove a wireless device from the system	XXXX_DEL:YYYYYYYY	YYYYYYYY = 8-character wireless device ID code	1111_DEL:5261841A
Replace a wireless device by another wireless device of the same model	1111_REP:YYYYYY <ZZZZZZZZ	YYYYYYYY = old 8-character wireless device ID code; ZZZZZZZZ = new 8-character wireless device ID code	1111_REP:5261841A <41286652
Verify free wireless channels	XXXX_STATUS_FREE	The system will send you a text in return, with the number of available free wireless channels.	1111_STATUS_FREE
Get wireless device information	XXXX_RFINFO:Zn or XXXX_RFINFO: YYYYYYYY	Zn = [Z3... Z34] The system will send you a text in return, with the following information: <ul style="list-style-type: none"> • Wireless device battery level; • Wireless signal level; • Test Time value • Firmware version. 	1111_RFINFO:5261841A
Verify wireless device operation status	XXXX_TEST:Zn	Zn = [Z3... Z34] The system will send you a text in return indicating if a wireless device is operational.	1111_TEST:Z6
Get wireless device temperature	XXXX_TEMP:Zn	Zn = [Z3... Z34] The system will send you a text in return indicating temperature value measured by a built-in temperature sensor (if any) of a specified wireless device.	1111_TEMP:Z9

NOTE: The underscore symbol '_' in these instructions represents a space. So when typing an SMS text message, replace the underscore symbol with a single space.

SMS Central Number Settings

Function	Command	Value Range / Comment	Example
Verify SMS text message central number	XXXX_SMS_+44111YYYY1	The SMS central number is normally already saved in the SIM by your mobile phone network provider. However if you fail to receive SMS text messages from the alarm system, you will have to enter it yourself having first got it from your mobile phone provider. If you continue to have problems communicating with the SIM card you installed into your alarm system, try using a SIM card from a different mobile telephone operator.	1111_SMS_+44255YYYY1

ELDES Cloud Services

Function	Command	Value Range / Comment	Example
Get ELDES Cloud Services ID code	XXXX_SMART_ID	The system will send you a text in return, with the multi-character code required by ELDES Cloud Services feature.	1111_SMART_ID
Enable ELDES Cloud Services	XXXX_SMART:ON		1111_SMART:ON
Disable ELDES Cloud Services	XXXX_SMART:OFF		1111_SMART:OFF

Remote System Restart

Function	Command	Value Range / Comment	Example
Restart system remotely	XXXX_RESET	In some critical situations it might be necessary to restart the system, for instance after changing the GPRS settings.	1111_RESET

NOTE: The underscore symbol '_' in these instructions represents a space. So when typing an SMS text message, replace the underscore symbol with a single space.

Monitoring Station Settings

Function	Command	Value Range / Comment	Example
Enable MS Mode	XXXX_SCNSET:ON	The system can be configured to report events to the monitoring station by transmitting data messages to the monitoring station. The system connects to the monitoring station when the MS (Monitoring Station) mode is enabled.	1111_SCNSET:ON
Disable MS Mode	XXXX_SCNSET:OFF		1111_SCNSET:OFF
Set server IP address	XXXX_SETGPRS:IP:add.add.add.add	ADD.ADD.ADD.ADD = server IP address. Public IP address of the machine running EGR100/ESR100 or Kronos monitoring station software.	1111_SETGPRS:IP:65.82.110.15
Set server port number	XXXX_SETGPRS:PORT:port	port = port number, 1... 65535]. Forwarded port of the machine running EGR100/ESR100 or Kronos monitoring station software.	1111_SETGPRS:PORT:5521
Select protocol	XXXX_SETGPRS:PROTOCOL:PPP	PPP = protocol, [TCP... UDP] TCP or UDP protocol. UDP is highly recommended for EGR100 data format.	1111_SETGPRS:PROTOCOL:UDP
Set APN	XXXX_SETGPRS:APN:ACCPN	ACCPN = access-point-name. Access-point-name of GPRS parameters provided by the GSM operator.	1111_SETGPRS:APN:internet

NOTE: The underscore symbol '_' in these instructions represents a space. So when typing an SMS text message, replace the underscore symbol with a single space.

Monitoring Station Settings

Function	Command	Value Range / Comment	Example
Set user name	XXXX_ SETGPRS:USER:USR	USR = user name. User name of GPRS parameters provided by the GSM operator. Depending on the GSM operator, only APN might be required to set up.	1111_SETGPRS:USER:int-user
Set password	XXXX_ SETGPRS:PSW:PASS	PASS = password Password of GPRS parameters provided by the GSM operator. Depending on the GSM operator, only APN might be required to set up.	1111_SETGPRS:PSW:int-pass
View server IP address, port, protocol and GPRS parameters	XXXX_SETGPRS?	The system will reply you with server IP address, port, protocol and GPRS parameter values.	1111_SETGPRS?

Service Mode


Function	Command	Value Range / Comment	Example
Activate Service mode	XXXX_ SERVICEMODE:ON	see 7.17. Service Mode	1111_SERVICEMODE:ON
Deactivate Service mode	XXXX_ SERVICEMODE:OFF		1111_SERVICEMODE:OFF

NOTE: The underscore symbol ‘_’ in these instructions represents a space. So when typing an SMS text message, replace the underscore symbol with a single space.



5. HOW TO PROGRAM THE SYSTEM USING EKB3W/EWKB4 WIRELESS KEYPAD

In order to configure and control the PITBULL ALARM PRO (or PITBULL ALARM PRO -3G) system using EKB3W/EWKB4 wireless keypad, please refer to the following information first.

ESSENTIAL INFORMATION FOR PROGRAMMING VIA EKB3W/EWKB4 WIRELESS KEYPAD

- Before configuring the system using EKB3W/EWKB4 wireless keypad, the Configuration mode must be activated by entering ***Adminpassword#** command. By default the command is ***1470#**.
- To deactivate Configuration mode, enter the aforementioned command again.
- If you entered unnecessary characters by mistake, press  key to clear the characters that have been entered. Alternatively, you can wait for 10 seconds until the keypad buzzer will provide a long beep indicating that the entered characters have been cleared.

The following table provides a list of EKB3W/EWKB4 wireless keypad indications, which are relevant during Configuration mode.

Indication	Description
Indicator  flashing	Configuration mode activated successfully.
Indicator  flashing	Valid parameter entered and awaiting for valid value to be entered.
1 long beep	Non-existing command or invalid parameter value entered.
3 short beeps	Command entered successfully.

NOTE: The system can be configured using only one keypad at a time. Other connected keypads will be inactive while the Configuration mode is activated.

NOTE: Configuration mode will automatically deactivate if 1 minute after the last key-stroke expires.

Function	EKB3W/EWK B4	Value	Range
Activate/deactivate Configuration mode	Xaaaa#		
Main Settings			
Change SMS password	14xxxx#	xxxx	0001 - 9999
Set user code	15yyxxx#	yy	01 - 10
		xxxx	0000 - 9999
Replace user code	63yyyyxxx#	yyyy	0000 - 9999
		xxxx	0000 - 9999
Delete user code	65xxx#	xxxx	0000 - 9999
Change administrator password	16aaaa#	aaaa	0000 - 9999
Set user phone number	17xxxxxxxxxxxxxxxx#	xx	01 - 10
		xxxxxxxxxxxxxx	
Set system date and time	66YYYYMMDDhrmn#	YYYY	
		MM	01 - 12
		DD	01 - 31
		hr	00 - 23
		mn	00 - 59
Disable control from any phone number	120#		

Comment	Example
4-digit administrator password	*1470#
Main Settings	
new 4-digit SMS password default password = 0000 must be changed!	142258#
user code slot	15025562#
new 4-digit user code default User Code 1 = 1111 recommended to change	
existing 4-digit user code	6355623281#
new 4-digit user code	
existing 4-digit user code	653281#
new 4-digit administrator password	161508#
default password = 1470 recommended to change	
user phone number slot	170044170911YYYYY1#
user phone number, 15 digits max.; supported format: • international (with 00) - example for UK: 00441709111YYYY. • local - example for UK: 01709111YYYY.	
year	66201408231625#
month	
day	
hours	
minutes	
arming/disarming and configuration by a non-listed phone number is denied	120#


Function	EKB3W/EWK B4	Value	Range
Activate/deactivate Configuration mode	*aaaa#		
Enable control from any phone number	121#		

Zone Settings

Set entry delay	54xxyyyyy#	xx	01 - 34
		yyyyy	0 - 65535
Set exit delay	72xxx#	xxx	0 - 600
Disable zone	52xx0#	xx	01 - 34
Enable zone	52xx1#	xx	01 - 34
Bypass violated zone (must be entered without activating Configuration mode in advance)	§xxyyyy#	xx	01 - 34
		yyyyy	0000 - 9999
Activate bypassed zone (must be entered without activating Configuration mode in advance)	§xxyyyy#	xx	01 - 34
		yyyyy	0000 - 9999

Comment	Example
4-digit administrator password	*1470#
arming/disarming and configuration by a non-listed phone number providing a valid SMS password is permitted	121#

Zone Settings	
zone number	540245#
entry delay in seconds	
exit delay in seconds	7258#
zone number	52380#
zone number	52121#
zone number	§093281#
4-digit user code	
zone number	§093281#
4-digit user code	

Function	EKB3W/EWKB4	Value	Range
Activate/deactivate Configuration mode	Xaaaa#		
Set zone type	53xx1#		
	53xx2#		
	53xx3#		
	53xx4#		
	53xx5#		
	53xx6#		
	53xx7#		
	53xx8#		
		xx	01 - 34
STAY Mode Settings			
Enable STAY attribute for individual zone	56xx1#	xx	01 - 34
Disable STAY attribute for individual zone	56xx0#	xx	01 - 34
Manual system arming in STAY mode (must be entered without activating Configuration mode in advance)	 xxxx	xxxx	
PGM Output Settings			

Comment	Example
4-digit administrator password	✕1470#
Interior Follower	53053#
Instant	
24-Hour	
Delay	
Fire	
Panic/Silent	
Report	
Instant Silent	
zone number	
STAY Mode Settings	
zone number	56031#
zone number	56270#
4-digit user code	🏠 3281#
PGM Output Settings	

Function	EKB3W/EWKB4	Value	Range
Activate/deactivate Configuration mode	Xaaaa#		
Turn ON PGM output/set PGM output startup state as ON	61xx1#	xx	01 - 32
Turn OFF PGM output/set PGM output startup state as OFF	61xx0#	xx	01 - 32
Siren/Alarm Settings			
Set alarm duration	10xx#	xx	00 - 10
Disable Bell Squawk	290#		
Enable Bell Squawk	291#		
Disable siren activation in case of wireless signal loss with wireless device	760#		
Enable siren activation in case of wireless signal loss with wireless device	761#		
Notification Settings			
Disable periodic INFO SMS	110000#		

Comment	Example
4-digit administrator password	*1470#
PGM output number	61201#
PGM output number	61250#
Siren/Alarm Settings	
alarm duration in minutes	1005#
disable system arm/disarm indication by siren sound	290#
enable 2 short siren beeps when the system is armed; 1 long siren beep when the system is disarmed	291#
system will not activate siren if it loses wireless signal with a wireless device	760#
system will activate siren if it loses wireless signal with a wireless device	761#
Notification Settings	
disable INFO SMS	

Function	EKB3W/EWKB4	Value	Range
Activate/deactivate Configuration mode	*aaaa#		
Set periodic INFO SMS	11xxyy#	xx	01 - 23
		yy	00 - 99
Disable call in case of alarm	300#		
Enable call in case of alarm	301#		
Disable SMS in case of alarm	310#		
Enable SMS in case of alarm	311#		
Disable call in case of alarm for individual user phone number	28xx0#	xx	1 - 10
Enable call in case of alarm for individual user phone number	28xx1#	xx	1 - 10
Disable simultaneous SMS delivery in case of alarm	210#		

Comment	Example
4-digit administrator password	*1470#
set time (hours = xx) for periodic INFO SMS delivery or period in hours (if the period = yy in days is set to 0)	110315#
system will not call any listed user phone number in case of alarm	300#
system will call all the listed user phone numbers in case of alarm starting with User 1. If the call is not answered or user is unavailable, the system will move to the next listed user phone number until the call is answered or rejected	301#
system will not send SMS text message to any listed user phone number in case of zone/tamper alarm	310#
system will send SMS text message to all listed user phone numbers in case of zone/tamper alarm starting with User 1. If the SMS text message is not delivered (SMS delivery report not received) within 20 seconds, the system will move to the next listed user phone number until the SMS text message is delivered	311#
user phone number slot	28030#
user phone number slot	28041#
system will not send SMS text messages to all listed user phone numbers simultaneously in case of zone/tamper alarm	210#

Function	EKB3W/EWKB4	Value	Range
Activate/deactivate Configuration mode	*aaaa#		
Enable simultaneous SMS delivery in case of alarm	211#		
Disable arm/disarm SMS for individual user phone number	75xx0#	xx	1 - 10
Enable arm/disarm SMS for individual user phone number	75xx1#	xx	1 - 10
Disable simultaneous SMS delivery regarding arm/disarm	220#		
Enable simultaneous SMS delivery regarding arm/disarm	221#		
Disable SMS regarding mains power supply loss/restore	130#		
Enable SMS regarding mains power supply loss/restore	131#		
Disable SMS in case of back-up battery fault	190#		

Comment	Example
4-digit administrator password	*1470#
system will send SMS text messages to all listed user phone numbers simultaneously in case of zone/tamper alarm regardless of SMS text message delivery status	211#
user phone number slot	75060#
user phone number slot	75101#
system will not send SMS text message to all listed user phone numbers simultaneously regarding system arm/disarm	220#
system will send SMS text message to all listed user phone numbers simultaneously regarding system arm/disarm regardless of SMS text message delivery status	221#
system will not send SMS text message to any listed user phone number regarding mains power supply loss/restore	130#
system will send SMS text message to all listed user phone numbers regarding mains power supply loss/restore starting with User 1. if the SMS text message is not delivered (SMS delivery report not received) within 20 seconds, the system will move to the next listed user phone number until the SMS text message is delivered	131#
system will not send SMS text message to any listed user phone number in case of back-up battery fault	190#

Function	EKB3W/EWKB4	Value	Range
Activate/deactivate Configuration mode	*aaaa#		
Enable SMS in case of back-up battery fault	191#		
Disable SMS delivery report for all system notifications	380#		
Enable SMS delivery report for all system notifications	381#		
Detector Sensitivity Level Settings			
Set PIR detector sensitivity level	79xx#	xx	20 - 99
GSM Audio Settings			
Set speaker level	71xxx#	xx	00 - 100
Monitoring Station Settings			
Enable MS mode	231#		
Disable MS mode	230#		
Set Account number	27cccc#	cccc	0000 - 9999

Comment	Example
4-digit administrator password	*1470#
System will send SMS text message to all listed user phone numbers in case of back-up battery fault, starting with User 1. if the SMS text message is not delivered within 20 seconds, the system will move to the next listed user phone number until the SMS text message is delivered	191#
disable SMS delivery report to verify the SMS delivery to user phone number status	380#
the system waits for the GSM provider to confirm the successful SMS text message delivery. in case of no SMS delivery report within 20 seconds, the system sends an SMS text message to the next listed user phone number	381#
Detector Sensitivity Level Settings	
higher value = lower sensitivity level	7960#
GSM Audio Settings	
speaker level	7125#
Monitoring Station Settings	
allow data message delivery to the monitoring station	231#
disallow data message delivery to the monitoring station	230#
4-digit number required to identify the alarm system unit by the monitoring station	275614#

Function	EKB3W/EWKB4	Value	Range
Activate/deactivate Configuration mode	*aaaa#		
Disable data message	24010#		
	24020#		
	24030#		
	24040#		
	24050#		
	24060#		
	24070#		
	24080#		
	24090#		
	24100#		
	24110#		
	24120#		
	24130#		
	24140#		
	24150#		
	24160#		
	24170#		
	24180#		
	24190#		
	24250#		
	24260#		

Comment	Example
4-digit administrator password	*1470#
burglary alarm/restore	24070#
mains power supply loss/restore	
armed/disarmed by user	
test event	
battery fault	
tamper alarm/restore	
silent alarm/restore	
system started	
24-hour alarm/restore	
fire alarm/restore	
low battery	
temperature risen	
temperature fallen	
wireless signal loss/restore	
armed/disarmed in STAY mode	
system shut down	
armed/disarmed automatically	
Arm In STAY Mode	
Zone Bypassed/Activated	
Jammer Detected	
Critical CO level	

Function	EKB3W/EWKB4	Value	Range
Activate/deactivate Configuration mode	Xaaaa#		
Enable data message	24011#		
	24021#		
	24031#		
	24041#		
	24051#		
	24061#		
	24071#		
	24081#		
	24091#		
	24101#		
	24111#		
	24121#		
	24131#		
	24141#		
	24151#		
	24161#		
	24171#		
	24181#		
	24191#		
	24251#		
	24261#		

Comment	Example
4-digit administrator password	*1470#
armed/disarmed by user	24051#
test event	
battery fault	
tamper alarm/restore	
silent alarm/restore	
system started	
24-hour alarm/restore	
fire alarm/restore	
low battery	
temperature risen	
temperature fallen	
wireless signal loss/restore	
armed/disarmed in STAY mode	
system shut down	
armed/disarmed automatically	
armed/disarmed by user	
test event	
Arm In STAY Mode	
Zone Bypassed/Activated	
Jammer Detected	
Critical CO level	

Function	EKB3W/EWK84	Value	Range
Activate/deactivate Configuration mode	Xaaaa#		
Set primary connection	480#		
	481#		
	482#		
Set backup connections	83bb0#		
	83bb1#		
	83bb2#		
	83bb3#		
		bb	01 - 02
Set delay after last communication attempt	69xxxxx#	xxxxx	0 - 65535
Set server IP address	40xxxxxxxxxxxxx#	xxxxxxxxxxxxx	
Set server port number	44xxxxx#	xxxxx	0 - 65535
Set DNS1	41xxxxxxxxxxxxx#	xxxxxxxxxxxxx	
Set DNS2	42xxxxxxxxxxxxx#	xxxxxxxxxxxxx	
Select protocol	430#		
	431#		
Set number of GPRS attempts	68xxx#	xxx	01 - 255
Set test period	46xxxxx#	xxxxx	0 - 65535
Set Unit ID	47xxxx#	xxxx	0000 - 9999

Comment	Example
4-digit administrator password	✕1470#
GPRS network	481#
Voice calls	
SMS	
GPRS network	83020#
Voice calls	
SMS	
not in use	
backup connection slot	
period in seconds	69100#
server IP address excluding dots	40085222120085#
server port number	44250#
DNS1 IP address	40085222120081#
DNS2 IP address	40085222120082#
TCP	431#
UDP	
number of data transmission attempts via GPRS network in case the initial attempt was unsuccessful	6825#
ping period via GPRS network in seconds	46260#
4-digit number required to identify the alarm system unit by EGR100 middle-ware/ESR100 digital receiver (communication via GPRS network)	475563#

Function	EKB3W/EWKB4	Value	Range
Activate/deactivate Configuration mode	*aaaa#		
Set monitoring station phone number	26 xx yyyyyyyyyyyyyy#	xx yyyyyyyyyyyyyy	01 - 03
Set number of Voice Calls attempts	37xx#	xxx	01 - 10
Service Mode			
Activate Service mode	671#		
Deactivate Service mode	670#		

Comment	Example
4-digit administrator password	*1470#
monitoring station phone number slot for communication via Voice Calls	26020044170911 YYYYY1#
monitoring station phone number, 15 digits max.; supported format: <ul style="list-style-type: none"> • international (with 00) - example for UK: 0044170911 YYYYY1. • local - example for UK: 0170911 YYYYY1. 	
number of data transmission attempts via Voice Calls in case the initial attempt was unsuccessful	3706#
Service Mode	
see 7.17. Service Mode	671#
	670#

6. TROUBLESHOOTING

Fault	Possible reason
Lens indicator OFF	<ul style="list-style-type: none">• No mains 230V power• Power supply connector is unplugged• Signal too weak or out of coverage
Indicator is blinking once a second	<ul style="list-style-type: none">• SIM card is missing• PIN code hasn't been disabled• SIM card is not active
System does not send any SMS text messages and/or does not ring	<ul style="list-style-type: none">• SIM card account is depleted• Incorrect SIM central number• No network signal• User number is not listed in (or call was made from a non-listed number and access from such numbers has been disabled)
SMS text message received: "Incorrect Format"	<ul style="list-style-type: none">• Wrong syntax• Space is in wrong place in text/SMS message• Manufacturer default password has not been changed• The NR1 user has not been programmed in
Your existing PITBULL ALARM PRO (or PITBULL ALARM PRO -3G) does not recognise an ELDES wireless device	<p>EITHER</p> <ul style="list-style-type: none">• Wireless mode is disabled. Please refer to <i>Eldes Utility software</i> to enable it. <p>OR</p> <ul style="list-style-type: none">• Wireless device battery is out of energy or the device is not switched ON.
Some users are not getting arm-disarm and/or alarm notifications.	<ul style="list-style-type: none">• If you normally configure your PITBULL ALARM PRO (or PITBULL ALARM PRO -3G) by SMS text message, you should be aware that there are some user options which can be set when using <i>Eldes Utility software</i>, but not when using configuration by SMS. Review system settings using the <i>EL-DES Utility software</i> and you will see a fuller picture of settings for individual users.

If you cannot find the answer to your problem above, please contact your local distributor.

More up to date information about your device and other ELDES products can be found at www.eldesalarms.com

7. ADDITIONAL INFORMATION FOR ADVANCED USERS

OVERVIEW

This section contains the wired zone and output wiring diagrams and other system features, such as zone, tamper, PGM output, siren operation, monitoring station operational description and settings, remote configuration via GPRS network connection and firmware upgrade procedure.

In this section you will meet the following icons indicating configuration and control of a certain feature supported by the PITBULL ALARM PRO (or PITBULL ALARM PRO -3G) system:



Please, refer to section **4. HOW TO PROGRAM THE SYSTEM USING YOUR MOBILE PHONE.**



Please, refer to section **5. HOW TO PROGRAM THE SYSTEM USING EKB3W/EWKB4 WIRELESS KEYPAD.**



Please, refer to *Eldes Utility software's* documentation.



The function can be operated by EWK2 - wireless keyfob

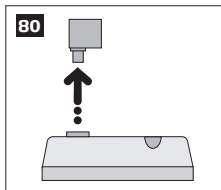
7.1. How to connect a wired siren or a LED indicator to the wired output

The output can be set to operate either as a siren output leading the connected wired siren activation in case of alarm or for showing the following system conditions by a connected LED indicator:

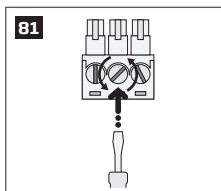
- **NO SIM Inserted** - SIM card not present. The LED indicator will flash if the SIM card is not present in the PITBULL ALARM PRO (or PITBULL ALARM PRO -3G).
- **SIM PIN Enabled** - PIN code left enabled. The LED indicator will flash with pauses if the PIN code is not disabled on the SIM card that is inserted in the PITBULL ALARM PRO (or PITBULL ALARM PRO -3G).
- **GSM Operator Error** - GSM connection error. The LED indicator will flash with pauses in case of this error.
- **Exit/Entry Delay** - Exit and entry delay time-out. The LED indicator will flash during countdown of exit and entry delay time-out.
- **Zone Z1 Violated** - Zone Z1 violation. When PIR detector's zone Z1 is violated, the LED indicator will illuminate and turn OFF when the detector's zone Z1 is restored.
- **Alarm** - System alarm. The LED indicator will turn ON in case of alarm and turn OFF when the alarm ends.
- **System Armed** - System armed or disarmed. LED indicator will be illuminated once the system is armed and turned OFF once the system is disarmed.

Wired siren/bell

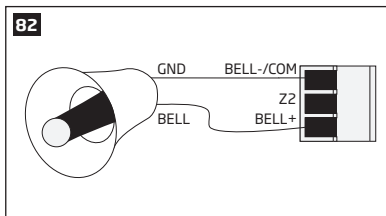
1. Remove the terminal block from the slot.



2. Loosen the screws of the terminals using a flathead screwdriver.

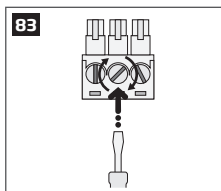


3. Connect **BELL** wire (usually - red) of the wired bell/siren to **BELL+** terminal, while the **GND** (usually - black) wire to **BELL - / COM** terminal.

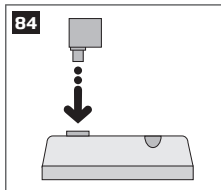


The wired siren/bell, connected to the wired output, must be piezo type and powered from +7... +11V. The current consumption must not exceed 150mA.

4. Screw in the terminals.



5. Insert back the terminal block.



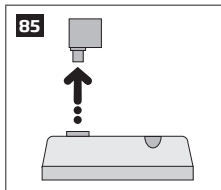
6. Set the **Output Mode** as **Siren** under *Management* section in the *Eldes Utility* software.

NOTE: No additional power supply is required for the siren/bell.

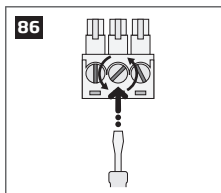
NOTE: For a more convenient installation, we recommend using EWS2 and EWS3 wireless sirens.

System condition indication by LED indicator

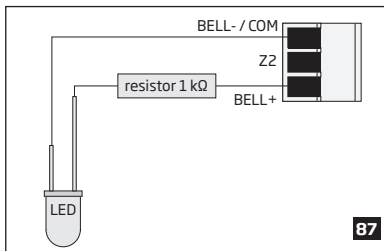
1. Remove the terminal block from the slot.



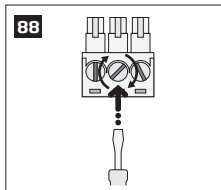
2. Loosen the screws of the terminals using a flathead screwdriver.



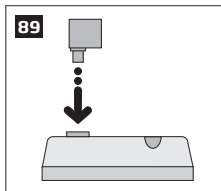
3. Connect LED indicator's **anode** lead (longer) to any of 1k Ω nominal resistor lead and the remaining 1k Ω nominal resistor lead to the **BELL+** terminal, while the **cathode** lead (shorter) to **BELL - / COM** terminal.



4. Screw in the terminals.



5. Insert back the terminal block.



5. Under *Management* → *Settings* section in *Eldes Utility software*, set the **Output Mode** as **Indicator** and under the **Output Indication** column, enable the check-box (-es) corresponding to the desired system conditions, e.g. **System Armed** check-box.

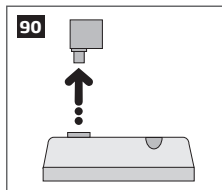
NOTE: The resistor and the LED indicator are NOT supplied with the PITBULL ALARM PRO system and are NOT mandatory to use. Please, obtain these components from your local store if desired.

7.2. How to connect a sensor to the wired zone

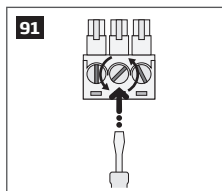
PITBULL ALARM PRO (or PITBULL ALARM PRO -3G) system comes equipped with the wired zone, therefore you may wish to connect a wired sensor to your system.

7.2.1.Connecting a wired sensor of NO (normally open) type

1. Remove the terminal block from the slot.

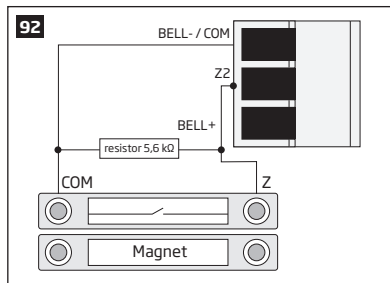


2. Loosen the screws of the terminals using a flathead screwdriver.

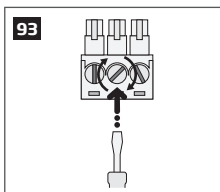


3. Connect the 5.6k Ω nominal resistor, supplied with your PITBULL ALARM PRO (or PITBULL ALARM PRO -3G) system, across **BELL- / COM** and **ZZ** terminal in parallel to the connected wires of the detection device.

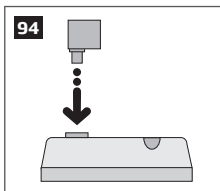
4. Connect the **Z** wire (usually - yellow) of the wired detection device to **ZZ** terminal, while the **COM** (usually - green) wire to **BELL - / COM** terminal.



5. Screw in the terminals.



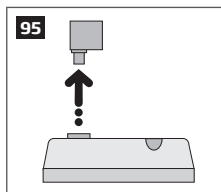
6. Insert back the terminal block.



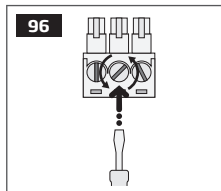
7. Set **Zone Status** of **Z2** to **Enabled** under *Zones/On Board* section in *Eldes Utility* software.

7.2.2. Connecting a wired sensor of NC (normally closed) type

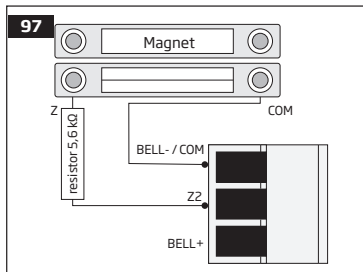
1. Remove the terminal block from the slot.



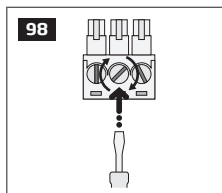
2. Loosen the screws of the terminals using a flathead screwdriver.



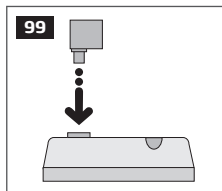
3. Connect the **COM** (usually - green) wire to **BELL - / COM** terminal.
4. Connect the **Z** wire (usually - yellow) of the wired detection device to any terminal of the 5.6k Ω nominal resistor (supplied with your alarm system), while the other resistor terminal - to **ZZ** terminal.



5. Screw in the terminals.



6. Insert back the terminal block.



7. Set **Zone Status** of **Z2** to **Enabled** under *Zones/On Board* section in *Eldes Utility* software.

7.3. Automatic system arming/disarming



The system comes equipped with automatic arm/disarm based on the assigned scheduler (-s). When one or more schedulers are assigned, the system will automatically arm/disarm on the specified weekdays and time set up in the scheduler. The system allows to assign up to 8 different schedulers. Each scheduler includes the following parameters:

- **Action:**
 - **Arm system**
 - **Disarm system**
- **Sch. No** - Determines scheduler number assigned to a certain action.
- **Status** - Determines scheduler status (enabled/disabled).
- **Hour** - Determines the point in time when the scheduler is to take effect in hours.
- **Minutes** - Determines the point in time when the scheduler is to cease to take effect in minutes.
- **Mo/Tu/We/Th/Fr/Sa/Su** - Determines day (-s) in the week when the scheduler is to be valid.

7.4. Zones

Detection devices such as motion detectors and door contacts are connected to the alarm system's zone terminals. Once connected, the associated zone's parameters must be configured.

PITBULL ALARM PRO (and PITBULL ALARM PRO -3G) comes equipped with 1 wireless zone and 1 on-board zone. For more details regarding zone expansion, please refer to section **7.4.2. Zone expansion**.

PITBULL ALARM PRO (and PITBULL ALARM PRO -3G) zones are classified by 3 categories:

Zone category	Description	Max. number of zones per device	Max. number of zones in total
On-board zones	Built-in wired zones of PITBULL ALARM PRO (or PITBULL ALARM PRO -3G) alarm system.	2	2
Wireless zones	Non-physical zones automatically created by connected wireless devices.	4*	32**
Virtual zones	Non-physical zones intended for Panic button feature (alarm activation upon pressing the button) on EWK2 wireless keyfob. Virtual zones can be manually created using <i>Eldes Utility software</i> .	32***	32***

* - Depends on the connected wireless device.

** - Available only if no virtual zones are present.

*** - Available only if no wireless zones are present.

7.4.1. Zone numbering

The zone numbers ranging from Z1 through Z2 are permanently reserved for on-board zones. The Z3-Z34 zone numbers are automatically assigned to the created virtual zones and the wireless devices connected to the system in the chronological order.

7.4.2. Zone expansion

For additional detection device connection, the number of zones can be expanded by:

- Pairing wireless devices (see section **3. HOW TO MANAGE THE WIRELESS DEVICES**).
- Creating virtual zones (see *Eldes Utility software's* documentation).

The maximum supported number of zones is 34.

7.4.3. Zone type definitions



- **Interior Follower** - The zone can be violated during exit and entry delay without causing an alarm. If the zone is violated before the entry delay has begun, it will cause an instant alarm followed by single notification delivery even if the zone has been violated multiple times while alarm period (by default - 1 minute) is in progress. If another Interior Follower-type zone has been violated it should act in the same way - cause an instant alarm followed by single notification delivery even if the zone has been violated multiple times while alarm period (by default - 1 minute) is in progress.



- **Instant** - The alarm is instantly caused if this zone is violated. After each alarm notification will be sent to user. This zone type is usually used for windows or other zones, and shock detectors.



- **24-Hour** - When the system is either armed or disarmed, the zone will cause instant alarm if violated. Normally, this type of zone is used for securing the areas that require constant supervisory.
- **Delay** - This zone type can be violated during exit and entry delay without causing an alarm. If the zone is violated when the system is armed, it will initiate entry delay countdown intended for the user to disarm the system. If the zone is left violated after the exit delay expires, it will cause an instant alarm. Typically, this zone type is used for door contacts installed at designated exit/entry doors.
- **Fire** - If this zone type is violated when the system is either armed or disarmed, the alarm will be instantly caused and the siren will emit pulsating sound. Typically, this zone type is used for flame and smoke detectors.
- **Panic/Silent** - This zone operates the same as 24-Hour zone type, but the system will not activate the siren and keypad buzzer if violated. Normally, this zone type is used for panic alarm buttons.

- **Report** - This zone operates the same as Panic/Silent zone type, but burglary event data message will be transmitted to the monitoring station if violated. However, no alarm will be caused - the system will NOT dial the listed user phone number regardless of the status of Call in Case of Alarm feature (enabled or disabled), nor the siren will sound. Typically, this zone type is used to report a certain non-alarm event, such as heating activation or fault.
- **Instant Silent** - This zone operates in the same way as Panic/Silent, but only when the system is armed.
- **CO Sensor** - This zone type operates identically to Fire zone type and it is used for CO (carbon monoxide) detector.

NOTE: The system will NOT activate siren and keypad buzzer only when Panic/Silent, Report or Instant Silent zone type is violated.

7.4.4. Zone attributes



- **Stay** - If this attribute is enabled, the zone, regardless of type, will not cause an alarm if violated when the system is Stay armed. For more details on arming the system in the Stay mode, please refer to section 3.3.5. **About STAY mode and how to activate it by EKB3W/EWKB4.**



- **Force** - This attribute determines whether the system can be armed or not while a zone is violated resulting in partial arm. If a zone with the Force attribute enabled is left violated until the exit delay expires, it will be ignored. Once the system is armed and the zone is restored, the violation will not be ignored and the zone will operate according to the determined type. For more details on zone types, please refer to section 7.4.3. **Zone type definitions.**



- **Alarm count to bypass** - This attribute determines a number of times the zone can be violated until it is automatically bypassed. It can be assigned to Interior Follower, Instant, Delay and Instant Silent zone types only.

7.4.5. Zone names



Each zone has a name that can be customized by the user. Typically, the name specifies a device type connected to a determined zone terminal, e.g.: *Kitchen doors opened*. The zone names are used in SMS text messages that are sent to the user during alarm. By default, the zone names are: Z1 - Zone1, Z2 - Zone2, Z3 - Zone3, Z4 - Zone4 etc.



ATTENTION: Space, colon, semi-colon characters, parameter names and/or values, such as PSW, STATUS, ON, OFF etc. are NOT allowed in zone names.

7.5. Tamperers



The tamper circuit is a single closed loop such that a break in the loop at any point will cause a tamper alarm regardless of the system status – armed or disarmed. During the tamper alarm, the system will activate the siren and the EKB3W/EWK4 wireless keypad buzzer (if violated tamper is the keypad's tamper on board) and send the SMS text message to the listed user phone number. The system will cause tamper alarm under the following conditions:

- If the enclosure of the PITBULL ALARM PRO (or PITBULL ALARM PRO -3G) alarm system or wireless device is opened, the physical tamper switch will be triggered. By default, indicated as *Tamper x* in the SMS text message (x = tamper number).
- If the wireless signal is lost due to low signal level or low battery power on a certain wireless device (see **3. HOW TO MANAGE THE WIRELESS DEVICES**).

7.5.1. Tamper names



Each tamper has a name that can be customized by the user. The tamper names are used in SMS text messages that are sent to the user during the tamper alarm. By default, the tamper names are: *Box tamper*, *Holder tamper*, *Tamper 3*, *Tamper 4* etc.

ATTENTION: Space, colon, semi-colon characters, parameter names and/or values, such as PSW, STATUS, ON, OFF etc. are NOT allowed in tamper names.

7.6. Programmable (PGM) outputs

A PGM output is a programmable output that toggles to its set up state when the user has initiated the PGM output state change manually. Normally, PGM outputs can be used to open/ close garage doors, activate lights, heating, watering and much more. When a PGM output turns ON, the system triggers any device or relay connected to it.

PITBULL ALARM PRO (or PITBULL ALARM PRO -3G) comes equipped with EW2 wireless zone and PGM output expansion module support allowing to connect up to four detection devices or two relays per module. For more details on how to pair these wireless devices, refer to section **3. HOW TO MANAGE THE WIRELESS DEVICES**.

7.6.1. PGM output numbering

The PGM output numbers ranging from C1 through C32 are automatically assigned to the wireless devices connected to the system in the chronological order.

7.6.2. PGM output names



Each PGM output has a name that can be customized by the user. Typically, the name specifies a device type connected to a determined PGM output, e.g. *Lights*. The name can be used instead of PGM output number when controlling the PGM output by SMS text message. By default, the PGM output names are: *C1 - Controll1, C2 - Controll2, C3 - Controll3, C4 - Controll4* etc.

ATTENTION: Space, colon, semi-colon characters, parameter names and/or values, such as PSW, STATUS, ON, OFF etc. are NOT allowed in PGM output names.

7.6.3. Turning PGM outputs ON and OFF



By default, all PGM outputs are turned OFF and the PGM output state is set to OFF when the system starts-up.



The PGM output can be turned ON for a determined time period and automatically turned OFF when the time period expires. As well as it can be turned OFF for a determined time period and automatically turned ON when the time period expires

When the PGM output is turned ON or OFF, the system will send a confirmation by SMS text message to the user phone number that the SMS text message was sent from.

NOTE: PGM output can be turned ON for a determined time period only when it is in OFF state

NOTE: PGM output can be turned OFF for a determined time period only when it is in ON state

7.6.4. PGM output type definitions



- **Output** - Operates as normal PGM output that can be controlled by the user. Normally, this type is used for any device or relay.
- **Siren** - Operates as siren output that automatically activates during alarm. Typically, this type is used for bell/siren connected to EW2 wireless device.

7.7. Siren



When the system is in alarm state, the siren will sound until the set time (By default - 1 minute) expires or until the system is disarmed.



NOTE: Due to battery power saving reasons, the wireless siren will sound for 1 minute regardless of the set alarm duration time, unless it is set to 0.



7.7.1. Bell Squawk



If enabled, the siren indicates the completed system arming and disarming process. After the system is successfully armed or disarmed, the siren/ bell will emit 3 short beeps.



7.7.2. Indication by EWS2 - wireless outdoor siren indicators



When enabled, the built-in LED indicators of EWS2 wireless outdoor siren will flash during the alarm.

7.7.3. Indication by EWS3 - wireless indoor siren indicators



When enabled, the built-in LED indicators of EWS3 wireless indoor siren will flash during the alarm. In the event of burglary, 24-hour or tamper alarm, EWS3 will flash the blue LED indicators, while in case of a fire alarm, the device can flash the red LED indicator.

7.7.4. EWF1/EWF1CO Interconnection



The interconnection feature automatically links all wireless smoke/CO detectors that are paired with the alarm system. When any EWF1/ EWF1CO detects smoke or carbon monoxide (CO), it will sound the built-in siren and send the signal to the alarm system resulting in an instant alarm followed by built-in siren sound caused by the rest of EWF1/EWF1CO wireless smoke/CO detectors. EWF1/EWF1CO device that detected smoke/CO will auto-reset when the smoke/CO clears, while the rest of EWF1/EWF1CO smoke/CO detectors will continue to sound in accordance with the set time period (by default - 30 seconds).

By default, the interconnection feature is enabled and the siren alarm duration is 30 seconds.

NOTE: The maximum supported EWF1/EWF1CO siren alarm duration is 255 seconds (4 mins. 15 secs.) even if the system's alarm duration value is longer.

NOTE: System's alarm duration has a higher priority against the EWF1/EWF1CO siren alarm duration, therefore EWF1/EWF1CO will sound as long as the system's alarm duration set up, unless the set up value for EWF1/EWF1CO siren alarm duration is shorter.

7.7.5. Disabling and enabling siren if wireless signal is lost



If a wireless device loses its wireless signal for 240 minutes or longer, the system will send notification by SMS text message to user phone number and activate the siren. By default, the siren will NOT be activated when wireless signal is lost.



7.8. Alarm indications and notifications



When a zone, depending on zone type (see section **7.4.3. Zone type definitions**), or tamper is violated, the system will cause an alarm. By default, the alarm duration is 1 minute (see section **7.7. Siren** regarding the alarm duration). During the alarm, the system will follow this pattern:



1. The system activates the siren.
- a) The siren will emit pulsating sound if the violated zone is of Fire-type, otherwise the sound will be steady.
- b) The EKB3W/EWKB4 wireless keypad buzzer will emit short beeps.

NOTE: Alarm must be caused only on EKB3W/EWKB4 zone.

- e) If one or more zones are violated and keypad is manually woken up, EKB3W/EWKB4 will light ON the corresponding violated zone indicator (-s) ranging from 1 through 12. Indicator SYSTEM will flash if one or more high-numbered zones are violated. If one or more tampers are violated, indicator SYSTEM will light ON. For more details on viewing violated high-numbered zone and tamper numbers by EKB3W/EWKB4 keypad, please refer to section. **3.3.8. Fault messages.**

For more details on how EKB3W/EWKB4 keypad operates and indicates the alarms, please refer to section **3.3.1. Sleep mode, how to wake up EKB3W/EWKB4 and view system alarms or faults.**

2. The system attempts to send an SMS text message, containing the violated zone/tamper name (see section **7.4.5. Zone names** and **7.5.1. Tamper names** on how to set a zone or tamper name respectively), to the first listed user phone number. The system will send SMS text messages regarding each violated zone/tamper separately.
- a) If the user phone number is unavailable and the system fails to receive the SMS delivery report during 45 seconds, it will attempt to send the SMS text message to the next listed user phone number. The user phone number may be unavailable due to the following reasons:
 - Mobile phone was switched off.
 - Was out of GSM signal coverage.
- b) By default, the system will continue sending the SMS text message to the next listed user phone numbers in the priority order until one is available. The system sends the SMS text message only once and will not return to the first user phone number if the last one was unavailable.
3. By default, the system attempts to ring the first user phone number. The system will dial regarding each violated zone/tamper separately.

The system will dial the next listed user phone number, if the previous user was unavailable due to the following reasons:

- Mobile phone was switched off.
- Mobile phone was out of GSM signal coverage.
- Provided “busy” signal.
- User did not answer the call after several rings, predetermined by the GSM operator.

- c) By default, the system will continue dialling the next listed user phone numbers in the priority order until one is available. The system will dial the user phone number 5 times if the first user phone number was out of GSM signal coverage/switched OFF, otherwise the system will dial only once. If the system ends up with all unsuccessful to contact any listed user phone number, will stop dialling and will not return to the first user phone number.
- d) The system will not dial the next listed user phone number if the previous one was available, but rejected the phone call. **NOTE:** If the user has voice mail service enabled on his mobile phone account, it might prevent the system calling second user.
- e) If Call All in Case of Alarm feature is enabled, the system will attempt to ring all listed user phone numbers in a row starting with the first user phone number with Call in Case of Alarm feature enabled. Regardless of the user being available, unavailable or if he/she has rejected the call, the system will still move to the next listed user with Call in Case of Alarm feature enabled. Once the system has ended contacting all listed users with Call in Case of Alarm feature enabled, it will repeat this cycle 3 more times (by default) by attempting to contact the previously unavailable users and skipping the available ones.

To silent the siren as well as to cease system phone calls and SMS text message sending to the user phone numbers, please disarm the system using a free of charge phone call, SMS text message, EKB3W/EWKB4 wireless keypad or EWK2 wireless keyfob.

For more details on how to disable/enable SMS text messages and phone calls to listed user phone number in case of alarm, please refer to section **7.9. System notifications.**

NOTE: Phone calls to the listed user phone number in case of alarm are disabled by force when MS mode and/or ELDES Cloud Services feature is enabled (see section **7.13. Monitoring station**).

NOTE: If one or more zones/tampers are violated during the alarm, the system will attempt to send as many SMS text message and dial the user phone number as many times as the zone/tamper was violated.

NOTE: If the system sent the SMS text message and/or dialled the user phone number after disarming the system, it means that the SMS text message and/or phone call was queued up in the memory before the system was disarmed.

7.9. System notifications

By default in case of a certain event, the system attempts to send an SMS text message to the first listed user phone number only. If the user phone number is unavailable and the system fails to receive the SMS delivery report during 45 seconds, it will attempt to send the SMS text message to the next listed user phone number. The user phone number may be unavailable due to the following reasons:

- Mobile phone was switched off.
- Was out of GSM signal coverage.

The system will continue sending the SMS text message to the next listed user phone numbers in the priority order until one is available. The system sends the SMS text message only once and will not return to the first

user phone number if the last one was unavailable. To change the SMS text message delivery algorithm, user can enable/disable the following parameters for certain events:

- **SMS Cascade enabled** - In case of specified event, system sends SMS text message to first user in a row. Only in case of failed attempt (user phone is turned off or etc.) system will send to another user in a row until first successful attempt.
- **SMS Cascade disabled** - If 'SMS Cascade' option is disabled, the system simultaneously sends a certain SMS text message to all available users regardless if the previous one has received the SMS text message or not.

Seq. No.	Event	Description
1	Tamper alarm	SMS text message sent to the user in case of tamper violation. Indicated as <i>Tamper x</i> .
2	Zone alarm	SMS text message sent to the user in case of zone alarm occurrence.
3	Report/Control zone triggered	SMS text message sent to the user in case the Report/Control-type zone is triggered.
4	System armed event	SMS text message sent to the user regarding armed system.
5	System disarmed event	SMS text message sent to the user about disarmed system.
6	Failed to arm	SMS text message sent to the user in case the system denies arming due to existing violated zone (-s)/tamper (-s).
7	Main power gone	SMS text message sent to the user in case the mains power supply is lost.
8	Main power restore	SMS text message sent to the user in case the mains power supply is restored.
9	Low battery	SMS text message sent to the user in case the back-up battery runs below 8V.
10	Wireless device low battery	SMS text message sent to the user in case the battery level of a wireless device reaches 5%.

Seq. No.	Event	Description
11	Temperature sensor fault	SMS text message sent to the user in case the temperature sensor is faulty.
12	Wireless signal loss	SMS text message sent to the user in case the wireless signal is lost or restored.
13	Jammer detected	SMS text message sent to the user in case a jammer is detected.
14	Jammer restore	SMS text message sent to the user in case a jammer is restored.
15	Wireless connection fault	SMS text message sent to the user in case of a wireless connection fault.
16	Wireless socket signal lost/restore	SMS text message sent to the user in case the wireless signal with EWM1 device is lost or restored.
17	Communication to MS failed	SMS text message sent to user in case the system ends up with all unsuccessful attempts by all connections to deliver data message to the monitoring station. This event can be managed using Eldes Utility only.
18	Periodical info	Info SMS text message sent to the user periodically by the set values.
19	Device started	SMS text message sent to the user on system startup.
20	System shutdown	When the system is running on backup battery power, it transmits the SMS text message before the back-up battery power is fully depleted.
21	Battery fault	SMS text message sent to the user in case the backup battery resistance is 2,5Ω or higher (battery is disconnected or requires replacement). Self-tested every 10 days.
22	Temperature exceeded	SMS text message sent to the user in case the temperature has increased above the MAX set value.

Seq. No.	Event	Description
23	Temperature fallen	SMS text message sent to the user in case the temperature has decreased below the MIN set value.
24	Auto bypass	SMS text message sent to the user in case a violated zone is bypassed.
25	Incoming SMS forwarding	SMS text message sent to the administrator or selected user phone number to be aware of all SMS messages, received by device's SIM card.
26	Critical CO level	SMS text message sent to the user in case the critical level 4 of carbon monoxide (CO) concentration detected by EWF1CO is reached.

7.10. Back-up battery, mains power supply status monitoring and memory



The system comes equipped with a back-up battery maintaining power supply of the system when the mains power supply is temporally lost. The implemented feature allows the system to perform a self-test on the back-up battery and notify the listed user phone number by SMS text message if:



- Battery has failed and requires replacement - battery resistance is 2,5Ω or higher; self-tested every 10 days.
- Battery power is running low - battery voltage is below 8V; constantly self-tested.



If the household electricity is unstable in the system installation area, the system may temporally lose its power supply and continue operating on the backup battery power. The system supervises the mains power supply and notifies listed user phone number by SMS text message after 30 seconds as well as indicates system fault condition on the keypad (see section **3.3.8. Fault messages**) after 60 seconds after the mains power loss. When the mains power restores, after 30 seconds the system will notify the user by SMS text message and the keypad will no longer indicate system fault.

The configuration settings are stored in a built-in memory, therefore even if the system is fully shut down, the configuration remains.

For more details on how to manage back-up battery and power supply notifications, please refer to section **7.9. System notifications**.

7.11. SMS Text Message Delivery Restrictions

By default, the system is restricted to send out up to 50 SMS text messages daily and up to 400 SMS text messages monthly. The send out message quantity is counted not only by delivered once, but also by number of attempts to send a message. To change the limits of SMS text message delivery restrictions, on *Eldes Utility software* open **System settings --> Messaging settings** section, where you'll be able to configure and choose further options.

Manage SMS text message delivery limits

Eldes Utility software

This operation may be carried out from the PC using the *ELDES Utility software*.

When the daily or monthly SMS text message delivery limit is exceeded, the system will notify the administrator by SMS text message, stating that "Day SMS sending limit exceeded"/ "Month SMS sending limit exceeded" respectively. The limit counter will automatically reset once the 24 hour (daily) or 30 days (monthly) restriction period is over. That will happen ONLY if you have set date and time values. You can reset the limits by referring to the following configuration method.

Reset SMS text message delivery limit counter

SMS

SMS text message content:

`ssss_REMOVEBAN`

Value: ssss - 4-digit SMS password.

Example: `1111_REMOVEBAN`

7.12. SMS Forward

PITBULL ALARM PRO (and PITBULL ALARM PRO -3G) comes up with a feature, called SMS forward. The system allows user to forward any received message from device's SIM card to the administrator's mobile phone number. Using *Eldes Utility software*, open **System** section, where you'll be able to configure and choose further options. There are 4 basic SMS forwarding options:

- **Forward All received SMS** - if this option is enabled, then every single message, coming to devices' SIM card, will be forwarded to the administrator's phone number.
- **Forward All received SMS from unknown users** - allows user to receive only those messages, coming from unlisted phone numbers.
- **Forward All received SMS from registered users with wrong syntax or wrong password** - user will receive only those messages from listed phone numbers, which contains a wrong syntax or a wrong password.
- **Forward All received SMS from specified Phone Number** - allows you to enter one specified phone number and exploit every single message that comes from it to your device's SIM card.

By default, SMS forward feature is disabled. To enable/disable this feature, please refer to the following configuration method.

Enable/disable SMS forward

Eldes Utility software

This operation may be carried out from the PC using the *ELDES Utility software*.

ATTENTION: If a single forwarded SMS message size exceeds 160 characters, it will be split into segments.

ATTENTION: User is able to add the administrator phone number as a specified phone number (by enabling the option *Forward All received SMS from specified Phone Number*), but none of SMS messages will be forwarded to administrator himself in any case!

7.13. Monitoring station



The system can be configured to report events to the monitoring station by transmitting data messages to the monitoring station. The system connects to the monitoring station when the MS (Monitoring Station) mode is enabled. When using the MS mode, the data messages transmitted to the monitoring station (see section **7.13.1. Data Messages - events**) will gain the highest priority for the delivery, therefore based on the communication method (see section **7.13.2. Communication**), a constant and stable connection with the monitoring station must be ensured. In case of connection failure, the system will attempt to restore the connection and if the monitoring is unavailable for a lengthy period of time, the system might consume a large amount of voice calls/data resulting in additional charges applied by the GSM operator according to the cell phone service plan.



Main Account is a 4-character code (By default - 9999) required to identify the alarm system unit by the monitoring station. Account 2 and Account 3 are used only when GPRS network method is selected and when necessary to set up to 3 server IP addresses (see section **7.13.2.1. GPRS Network**). While setting up a new Account, the user may choose a code consisting of both numbers (0 to 9) and letters A, B, C, D, E, F (not case-sensitive).

ATTENTION: The system will NOT transmit any data to the monitoring station while remote configuration or remote firmware update is in progress. However, during the remote configuration session, the data messages will be queued up and transmitted to the monitoring station after the remote configuration session is over, while during the firmware update process all data messages will be lost and will NOT be transmitted to the monitoring station after the firmware upgrade process is over.

ATTENTION: Phone calls to the listed user phone number in case of alarm **are disabled** by force when MS mode is enabled.

NOTE: Additional charges may apply for voice calls/data traffic based on your cell phone service plan when using the MS mode.

NOTE: While setting up a new Account using EKB3W/EWKB4 keypad, the user WON'T be able to enter any letters, only numbers (0 to 9) will be available.

7.13.1. Data Messages - events



The configuration of data messages is based on Ademco Contact ID protocol (**NOT** available in PITBULL ALARM PRO-3G). The data messages can either be transmitted to the monitoring station alone or with duplication by SMS text message to the listed user phone number. For more details on system notifications by SMS text message, please refer to section **7.9. System notifications**.

Seq. No.	Event code	Event	Description
1	1110	Fire zone alarm	Transmitted in case a zone of Fire type is violated.
2	3110	Fire zone restore	Transmitted in case a zone of Fire type is restored.
3	1124	Duress - access granted alarm	Transmitted in case when a user enters secured premises and the entry countdown begins.
4	3124	Duress - access granted restore	Transmitted in case when a user disarms secured premises before the entry countdown ends.
5	1130	Burglary alarm	Transmitted in case a zone of Delay (if not disarmed before entry delay countdown is completed), Interior Follower, Instant type is violated.
6	3130	Burglary restore	Transmitted in case a zone of Delay (if not disarmed before entry delay countdown is completed), Interior Follower, Instant type is restored.
7	1133	24-Hour zone alarm	Transmitted in case of zone of 24-Hour type is violated.
8	3133	24-Hour zone restore	Transmitted in case of zone of 24-Hour type is restored.
9	1144	Tamper fault alarm	Transmitted in case the tamper is violated.
10	3144	Tamper fault restore	Transmitted in case the tamper is restored.
11	1146	Silent zone alarm	Transmitted in case of zone of Panic/Silent or Instant Silent type is violated.
12	3146	Silent zone restore	Transmitted in case of zone of Panic/Silent or Instant Silent type is restored.
13	1158	Temperature exceeded	Transmitted in case of the temperature has increased above the MAX set value.
14	1159	Temperature fallen	Transmitted in case of temperature has decreased below the MIN set value.
15	1301	Main power loss	Transmitted in case the mains power is lost.
16	3301	Main power restore	Transmitted in case the mains power is restored.
17	1302	Low battery	Transmitted in case the backup battery voltage runs below 8V.
18	1414	System shutdown	When the system is running on backup battery power, it transmits the data message before the backup battery power is fully depleted.
19	1311	Battery dead or missing	Transmitted in case the backup battery resistance is 2,5 Ω or higher (battery requires replacement). The battery is self-tested every 10 days.
20	1381	Wireless signal loss	Transmitted in case the connection with any wireless device is lost.

Seq. No.	Event code	Event	Description
21	3381	Wireless signal restore	Transmitted in case the connection with any wireless device is restored.
22	1401	Disarmed by user	Transmitted in case the system is disarmed.
23	3401	Armed by user	Transmitted in case the system is armed.
24	1403	Disarmed automatically	Transmitted in case the system is disarmed based on scheduled time.
25	3403	Armed automatically	Transmitted in case the system is armed based on scheduled time.
26	1441	Disarmed in Stay mode	Transmitted in case the system is disarmed in Stay mode.
27	3441	Armed in Stay mode	Transmitted in case the system is armed in Stay mode.
28	3456	Partial arm	Transmitted in case the system is armed, while violated zone (-s) with Force attribute enabled exist.
29	1570	Zone bypassed	Transmitted in case a violated zone is bypassed.
30	3570	Bypassed zone activated	Transmitted in case a bypassed zone is activated.
31	3602	Test event	Transmitted for system online status verification purposes.
32	1900	System started	Transmitted on system startup.
33	1354	Communication to MS Failed	Transmitted in case the system ends up with all unsuccessful attempts by all connections to deliver data message to the monitoring station.
34	1344	RF jammer detected	Transmitted in case the wireless signal is blocked by jammer.
35	3344	RF jamming stopped	Transmitted in case the wireless signal is restored after jamming.
36	1162	Critical CO Level	Transmitted in case when the critical level 4 of carbon monoxide (CO) concentration detected by EWF1CO is reached.
37	3162	Fresh air level	Transmitted in case when one of the critical CO levels has been sufficiently decreased
38	1150	Report/Control zone Alarm	Transmitted in case of zone of 24-Hour type is violated.
39	3150	Report/Control zone Restore	Transmitted in case of zone of 24-Hour type is restored.

The following table refers to user IDs included in arm/disarm data messages.

Type	ID
User Phone Number 1	0
User Phone Number 2	1
User Phone Number 3	2
User Phone Number 4	3
User Phone Number 5	4
User Phone Number 6	5
User Phone Number 7	6
User Phone Number 8	7
User Phone Number 9	8
User Phone Number 10	9
User Code 1 on Keypad	10
User Code 2 on Keypad	11
User Code 3 on Keypad	12
User Code 4 on Keypad	13
User Code 5 on Keypad	14
User Code 6 on Keypad	15
User Code 7 on Keypad	16
User Code 8 on Keypad	17
User Code 9 on Keypad	18
User Code 10 on Keypad	19
Keyfob 1 - Keyfob 16	54-69
Scheduler	70
Remote Code (EGR100)	71
Master Code on Eldes Cloud Services	72
User Code 2 - User Code 10 on Eldes Cloud Services	73-81

7.13.2. Communication



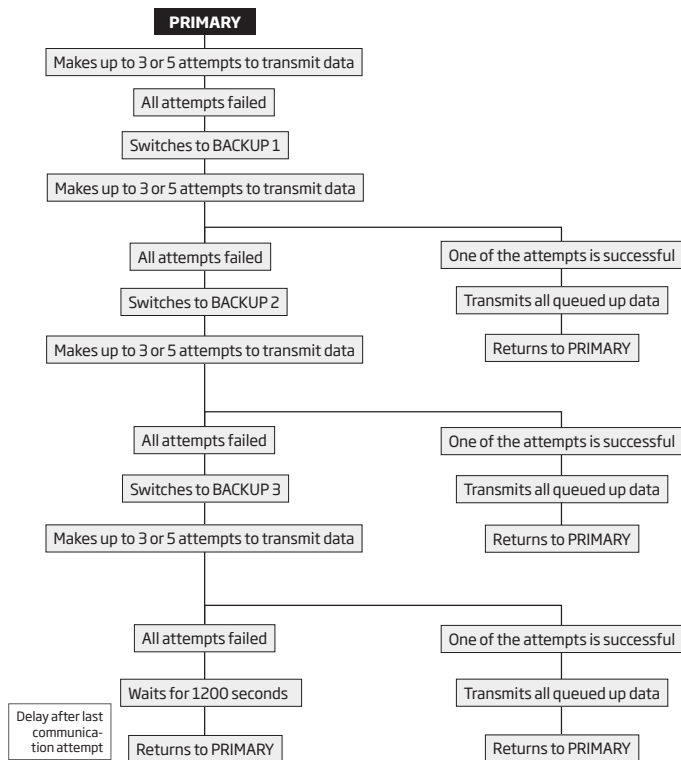
The system supports the following communication methods and protocols:

- GPRS network – EGR100, Kronos, SIA IP protocol.
- Voice calls (GSM audio channel) – Ademco Contact ID protocol. **NOT** available in PITBULL ALARM PRO-3G.
- SMS – Cortex SMS format.
- CSD (Circuit Switched Data).

Any communication method can be set as primary or backup connection. The user can set up to 3 backup connections in any sequence order.

Initially, the system communicates via primary connection with the monitoring station. By default, if the initial attempt to transmit data is unsuccessful, the system will make additional attempts until the data is successfully delivered. If all attempts are unsuccessful, the system will follow this pattern:

- a) The system switches to the backup connection that follows in the sequence (presumably - Backup 1).
- b) The system then attempts to transmit data by the backup connection.
- c) If the initial attempt is unsuccessful, the system will make additional attempts until the data is successfully delivered.
- d) If the system ends up with all unsuccessful attempts, it will switch to the next backup connection in the sequence (presumably - Backup 2) and will continue to operate as described in the previous steps. The connection is considered unsuccessful under the following conditions:
 - **GPRS network** – The system has not received the ACK data message from the monitoring station within 40 seconds.
 - **Voice calls:**
 - The system has not received the “handshake” signal from the monitoring station within 20 seconds.
 - The system has not received the “kiss-off” signal from the monitoring station within 5 attempts each lasting 1 second.
 - **SMS** – The system has not received the SMS delivery report from the SMSC (Short Message Service Center) within 45 seconds.
 - **CSD** – The system has not received the ACK data message from the monitoring station within 35 sec.
- e) If one of the attempts is successful, the system will transmit all queued up data messages by this connection.
- f) The system then returns to the primary connection and attempts to transmit the next data messages by primary connection.
- g) If the system ends up with all unsuccessful attempts by all connections, it will wait until the *Delay after last communication attempt* time (By default – 1200 seconds) expires and will return to the primary connection afterwards.
- h) If a new data message, except Test Event (ping), is generated during *Delay after last communication attempt* time, the system will immediately attempt to transmit it to the monitoring station, regardless of *Delay after last communication attempt* being in progress.



NOTE: The number of attempts, indicated in the diagram, are default and depends on the determined communication method.

7.13.2.1. GPRS network

The system supports data transmission to the monitoring station via IP-based networks by GPRS network. The supported data formats are the following:

- EGR100
- Kronos
- SIA IP DC-09-2013 (configurable as encrypted and non-encrypted)

To set up the system for data transmission via GPRS network, please follow the basic configuration steps:



1. Enable MS Mode parameter (see section **7.11. Monitoring Station**).



2. Set 4-character Main Account code (see section **7.11. Monitoring Station**). You can set the Account for up to 3 servers individually.



3. Set server IP address, which is a public IP address of ESR100 digital receiver, the machine running EGR100 or Kronos monitoring station software. You can set up to 3 server IP addresses in total.



4. Set server port, which is a port of ESR100 digital receiver, the machine running EGR100, Kronos monitoring station software or SIA IP DC-09-2013 protocol. You can set the port for up to 3 servers individually.



5. Select data format: EGR10, Kronos or SIA IP DC-09-2013. You can select the data format for up to 3 servers individually.



6. Select TCP or UDP protocol. UDP is highly recommended for EGR100 data format. You can select the protocol for up to 3 servers individually.



7. In case EGR100 is selected, set 4-digit Unit ID number. Unit ID number can be identical to Account number. You can set the Unit ID for up to 3 servers individually.



8. Set up APN, user name and password provided by the GSM operator. Depending on the GSM operator, only APN might be required to set up.



9. If more than one server IP address is set up, you may wish to enable parallel data transmission to all IP addresses simultaneously. By default, this feature is disabled, therefore the system will switch to the next IP address (if set up and selected in the connection priority sequence) in the event of failed connection with the previous server.



By default, if the initial attempt to transmit data to the monitoring station via GPRS network method is unsuccessful, the system will make up to 2 additional attempts. If all attempts are unsuccessful, the system will switch to next backup connection that follows in the sequence and will attempt to transmit data until it is successfully delivered to the monitoring station.



in case of EGR100 data protocol, in order to report the online status, the system periodically transmits (By default - every 180 seconds) Test Event data message (ping) to the monitoring station via GPRS network

For detailed step-by-step instructions on how to establish the communication between PITBULL ALARM PRO (or PITBULL ALARM PRO -3G) alarm system and EGR100 middle-ware, please refer to the middle-ware's HELP file.

ATTENTION: It is necessary to restart the system locally by powering down and powering up the system the system or remotely (see section **4. HOW TO PROGRAM THE SYSTEM USING YOUR MOBILE PHONE**) after changing the IP address or switching from TCP to UDP.

NOTE: The system is fully compatible with Kronos NET/Kronos LT monitoring station software for communication via GPRS network. When using a different monitoring station software, EGR100 middle-ware, ESR100 digital receiver or SIA IP protocol is required. EGR100 is freeware and can be downloaded at eldesalarms.com

NOTE: Kronos NET/Kronos LT software communicates via TCP protocol, while SIA IP DC-09-2013 and EGR100 middle-ware v1.2 and up support both TCP and UDP protocols. However, TCP protocol is NOT recommend to use with EGR100 or ESR100 (additional data traffic may occur).

7.13.2.2. Voice Calls and SMS

ATTENTION: Alarm system model PITBULL ALARM PRO - 3G **does NOT** support communication with MS station via Voice Calls method.

The system supports up to 3 monitoring station phone numbers for communication with the alarm system by Voice Calls or SMS communication method with receiver, using Ademco Contact ID (NOT available in PITBULL ALARM PRO-3G) or Cortex SMS data format respectively. Tel. Number 1 is mandatory, the other two can be used as backup phone numbers and are not necessary. The supported phone number formats are the following:

- **International (with plus)** - The phone numbers must be entered starting with plus and an international country code in the following format: +[international code][area code][local number], example for UK: +441709111YYYY. This format can be used when setting up the phone number by *Eldes Utility software*.
- **International (with 00)** - The phone numbers must be entered starting with 00 and an international country code in the following format: 00[international code][area code][local number], example for UK: 00441709111YYYY. This format can be used when setting up the phone number by EKB3W/EWKB4 keypad.
- **Local** - The phone numbers must be entered starting with an area code in the following format: [area code][local number], example for UK: 01709111YYYY. This format can be used when setting up the phone number by EKB3W/EWKB4 keypad and *Eldes Utility software*.

To set up the system for data transmission via Voice Calls or SMS, please follow the basic configuration steps:



1. Enable MS Mode parameter (see section **7.11. Monitoring Station**).



2. Set 4-character Main Account code (see section **7.11. Monitoring Station**).



3. Set Tel. Number 1... 3.



By default, if the initial attempt to transmit data to the monitoring station's Tel Number 1 via Voice Calls or SMS method is unsuccessful, the system will make up to 4 additional attempts. After all unsuccessful attempts, the system will continue to communicate with the monitoring station by switching to the next phone number that follows in the sequence and making up to 4 additional attempts if the initial attempt is unsuccessful. If all attempts to all phone numbers are unsuccessful, the system will switch to next backup connection that follows in the sequence and will attempt to transmit data until it is successfully delivered to the monitoring station.



Due to the individual configuration of each monitoring station, the system may fail to deliver the data message via Voice Calls communication method.

7.13.2.3. CSD

The system supports up to 5 monitoring station phone numbers for communication with the alarm system by CSD communication method. Tel. Number 1 is mandatory, the other four can be used as backup phone numbers and are not necessary. The supported phone number formats are the following:

- **International (with plus)** - The phone number must be entered starting with plus and an international country code in the following format: +[international code][area code][local number], example for UK: +441709111YYYY. This format can be used when setting up the phone number by *Eldes Utility* software.
- **International (with 00)** - The phone number must be entered starting with 00 and an international country code in the following format: 00[international code][area code][local number], example for UK: 00441709111YYYY. This format can be used when setting up the phone number by EKB3W/EWKB4 keypad.

To set up the system for data transmission via CSD, please follow the basic configuration steps:



1. Enable MS Mode parameter (see section **7.13. Monitoring Station**).



2. Set 4-character Main Account code (see section **7.13. Monitoring Station**).



3. Set Tel. Number 1... 5.



By default, if the initial attempt to transmit data to the monitoring station's phone number via CSD method is unsuccessful, the system will make up to 4 additional attempts. If all attempts are unsuccessful, the system will switch to next backup connection that follows in the sequence and will attempt to transmit data until it is successfully delivered to the monitoring station.

7.14. Event Log



The event log allows to chronologically register up to 1024 timestamped records regarding the following system events:

- System start.
- System arming/disarming.
- Zone violated/restored.
- Tamper violated/restored.
- Zone bypassing.
- Wireless device management.
- Temperature deviation by MIN and MAX boundaries.
- System faults.

The event log is of FIFO (first in, first out) type that allows the system to automatically replace the oldest records with the latest ones.

7.15. System configuration using Eldes Utility software



Eldes Utility software is intended for PITBULL ALARM PRO (or PITBULL ALARM PRO -3G) system configuration locally via USB port or remotely via GPRS network connection. This software simplifies system configuration process by allowing to use tablet, smartphone or a computer (based on OS Windows, MAC or Linux) in the process. Before starting to use Eldes Utility software, please follow the user guidance provided in software's documentation.

Eldes Utility software and can be found at www.eldesalarms.com

NOTE: *Eldes Utility software* is secured with administrator password. The default administrator password is **1470**.

7.16. DUAL SIM MANAGEMENT

ATTENTION: Alarm system model PITBULL ALARM PRO - 3G **does NOT** support DUAL SIM MANAGEMENT method, because it has only 1 Nano-SIM card slot.

The Dual-SIM feature allows the alarm system to operate with one of the two inserted SIM cards identified as Primary SIM and Secondary SIM respectively. The Primary SIM card works as the main default card, while the Secondary SIM card is intended for backup purposes or addition to the Primary SIM card - SMS text message sending/ calling to the listed user phone number and/or communication with the monitoring station.

The Dual-SIM feature can operate in one of the following modes:

- **Disabled** - The Secondary SIM card will not be functional and the system operates with Primary SIM card only (by default - enabled).
- **Automatic** - The system switches between the SIM cards in case of a GSM connection or one of the SIM cards failure.

Manage Dual -SIM feature



This operation may be carried out from the PC using the *ELDES Utility software*.

NOTE: Regardless of the selected mode, only one of the two SIM cards can operate at the same time.

7.16.1. Disabled Mode

Disabled mode is the default system mode that does not involve the Secondary SIM in the communication process. When this mode is in use, the system will ignore the Secondary SIM card even if inserted in the SIM card slot.

For more details on how the system communicates with the user and the monitoring station in Disabled mode, please refer to **7.8. ALARM INDICATIONS AND NOTIFICATIONS FOR USER** and **7.13.2. Communication** respectively.

7.16.2. Automatic Mode

Automatic mode involves both SIM cards in the communication process. In this mode there is no Primary or Secondary SIM card hierarchy, since both cards are equal and the SIM card that is currently in use maintains the GSM connection at all time, unless a failure occurs and the other card would replace the previous one.

When one of the SIM card fails, the system attempts to re-establish a connection with it by starting an initial reconnection for a set number of attempts (by default - 3 attempts). If all attempts fail, the system will switch to the other SIM card. If the other SIM card is responsive and a GSM connection is successfully established, the system will remain operating with that SIM card until it fails. However, if the other SIM card is unresponsive or it is not present in the SIM card slot, the system will return to the previous SIM card and attempt to establish a GSM connection with it. If the system fails to carry out this action, after a single attempt it will switch to the other SIM card. This cycle continues until one of the SIM cards responds and a GSM connection is successfully established. When the SIM card fails, the system will once again attempt to restore the GSM connection for a set number of attempts (by default - 3 attempts). If all attempts fail, the cycle will continue as described previously.

In Automatic mode the priority is to transmit data to the monitoring station, but if an event, which requires the system to send an SMS text message occurs, the system will send the SMS text message via the SIM card that is currently in use. This can only be carried out under the following conditions:

- among the attempts to transmit data to the monitoring station (depending on communication method).
- while switching the monitoring station connections.
- while switching between the SIM cards.

NOTE: ELDES Cloud Services will remain operational in Automatic mode, when used.

7.16.3. Remote connection

ATTENTION: The system will NOT send any data to the monitoring station while the remote connection is in progress. However, during the remote connection session, the data messages will be queued up and transmitted to the monitoring station after the remote connection session is over.

NOTE: EKB3W/EWKB4 keypad (if any) becomes inactive while the system is being configured remotely.

NOTE: When the Configuration mode is activated by EKB3W/EWKB4 keypad, remote system configuration is disabled.

Eldes Utility software provides remote system configuration ability via Internet using one of the following methods:

- ELDES proxy server (recommended). The connection can be established on the system via GPRS network.
- Running TCP/IP server on *Eldes Utility software* (advanced). The connection can be established on the system via GPRS network.

In order to start using the remote configuration feature, please run the step-by-step wizard and follow the steps provided in the start page of *Eldes Utility software*. Please, note that it will be necessary to send an SMS text message to the system's phone number in order to initiate the remote connection. By following the steps you will see what text must be sent to the system's phone number in such case (see the SMS command below):

Start the connection

SMS text message content:

ssss_STCONFIG

Value: ssss - 4-digit SMS password.

Example: 1111_STCONFIG

7.16.4. Ending the remote connection session

After the system configuration is complete, use one of the following methods to end the configuration process:

- Click **Disconnect** or **Stop** button and close *Eldes Utility software*;
- The session will automatically expire in 20 minutes. Before the last 5 minutes, the software will offer the user to extend the session for another 20 minutes.
- Alternatively, the connection with the server can be terminated at any time by sending an SMS text message.

Terminate the connection

SMS text message content:

ssss_ENDCONFIG

Value: ssss - 4-digit SMS password.

Example: 1111_ENDCONFIG

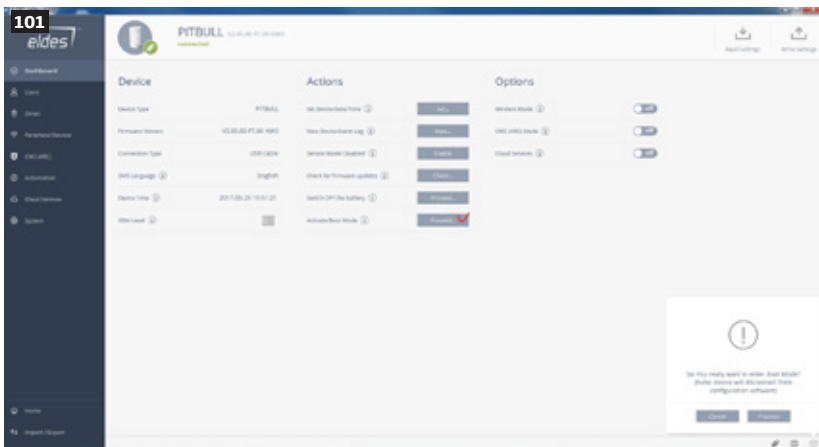
Once the session is expired or terminated, the system will reply with an SMS text message confirming the end of the session.

7.17. How to reset the system to default settings

1. Unplug USB cable (if any)
2. Open PITBULL ALARM PRO (or PITBULL ALARM PRO -3G) enclosure.
3. Press and hold the RESET button.
4. Wait for the LED to flash quickly several times.
5. Power down PITBULL ALARM PRO (or PITBULL ALARM PRO -3G).
6. Power up PITBULL ALARM PRO (or PITBULL ALARM PRO -3G).
7. Configuration has been restored to default.

7.18. How to upgrade the firmware locally via USB connection

1. Launch *Eldes Utility software*.
2. In *Eldes Utility software*, open Dashboard section.
3. In the Dashboard menu select Boot mode option (click on it).
4. Confirm the start of firmware update procedure by choosing Proceed (in the pop-up notification).
5. The new window pops-up containing a .bin file. Otherwise open My Computer and look for Boot Disk drive.
7. Delete the .bin file located in this drive.
8. Copy and paste in the very same window.
9. After the copying is done, close the Boot Disk drive folder.
10. Firmware upgraded.



7.19. How to upgrade the firmware remotely via GPRS connection

ATTENTION: The system will NOT transmit any data to monitoring station while updating the firmware remotely via GPRS network. All data messages will be lost and will NOT be transmitted to the monitoring station after the firmware upgrade process is over.

Before updating the firmware remotely via GPRS connection, make sure that:

- SIM card is inserted into SIM card slot of PITBULL ALARM PRO (or PITBULL ALARM PRO -3G) device.
- Mobile internet service (GPRS) is enabled on the SIM card.
- Power supply is connected to PITBULL ALARM PRO (or PITBULL ALARM PRO -3G) device.
- Default SMS password is changed to a new 4-digit password.
- At least User 1 phone number is set up.
- APN, user name and password are set up - please, contact your GSM operator to find out these parameters.

PITBULL ALARM PRO (or PITBULL ALARM PRO -3G) alarm system supports FOTA (firmware-over-the-air) feature. This allows to upgrade the firmware remotely via GPRS connection. Once the upgrade process is initiated, the system connects to the specified FTP server address where the firmware file is hosted and begins downloading and re-flashing the firmware. The firmware file must be located in a folder titled **firmware** (folder's name MUST be written in non-capital letters). In order to initiate the upgrade process, please, send the following SMS message.

FOTA

SMS text message content:

XXXX_FOTA

Value: XXXX- 4-digit SMS password.

Example:

1111_FOTA

Please, contact your local distributor to request the latest firmware file.

ATTENTION: Firmware filename MUST be renamed in lowercase format before using it.

ATTENTION: Comma and underscore character is NOT allowed to use in user name, password and firmware file name.

7.20. Service Mode



The system comes equipped with Service mode allowing to carry out system maintenance tasks, such as detection device replacement, tamper switch installation, wireless device battery replacement without causing zone or tamper alarm when Service mode is activated.



NOTE: Alternatively, the Service mode automatically deactivates when 1-hour timeout period expires or after arming the system.



7.21. ELDES Cloud Services

ELDES Cloud Services is a cloud-based platform Eldes providing a user-friendly graphical interface intended for system status monitoring and control:

- Arm/disarm the system.
- View system faults and alerts.
- Monitor temperature, GSM signal strength and backup battery level (these last two features are available for Administrator only).
- Control electrical appliance connected to the PGM outputs.

The connection with the platform can be established via GPRS network and can be accessed via smartphone application Eldes Security, developed for Android and iOS-based devices (iPhone, iPad).

To begin using new Eldes Security app, you will have to visit Google Play store (Android) or App Store (iOS) and download the application (or update it to the latest version!), install the application on your smartphone, launch the app (open it) and sign in or create your new personal account. Then log in to your ELDES Cloud Services account and add a device by following the step-by-step instructions provided on our website www.eldesalarms.com. When adding the device to your account, you will be prompted for ELDES Cloud Services ID, which can be obtained using *Eldes Utility software* or by sending the following SMS text message to the system's phone number.

ATTENTION: In case you DO NOT wish to use ELDES Cloud Services and your device is not associated with any ELDES Cloud Services account, please DO NOT leave ELDES Cloud Services enabled. Otherwise **additional charges may apply** for data traffic based on your cell phone service plan.

NOTE: **Additional charges may apply for data traffic** based on your cell phone service plan when using ELDES Cloud Services platform.

7.22. About STAY mode and how to activate it by Eldes Cloud Services

Stay mode allows the user to arm and disarm the alarm system without leaving the secured area. If the zones with Stay attribute enabled are violated when the system is Stay-armed, no alarm will be caused. Typically, this feature is used when arming the system at home before going to bed.

The system can be Stay-armed under the following conditions:

- **Automatic** - If a Delay-type zone is NOT violated during exit delay and a zone (-s) with Stay attribute enabled exists, the system will arm in Stay mode. When arming the system in Stay mode under this condition, one of the available arming methods must be used that provide exit delay.
- **Manual** - The system will skip exit delay countdown and instantly arm in Stay mode when using ELDES Cloud Services via smartphone application.

Arm the system in
Stay mode

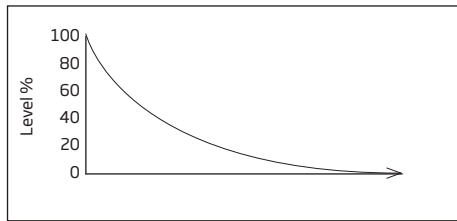
ELDES
Cloud
Services

This operation may be carried out using the ELDES Cloud Services.

8. RADIO SYSTEM INSTALLATION AND SIGNAL PENETRATION

WHAT YOU MUST KNOW BEFORE INSTALLING THE SYSTEM

Radio signals are electromagnetic waves, hence the signal becomes weaker the further it travels, the range is limited.



The following material shows theoretically evaluated relation between radio signal strength and the distance among devices.

The radio coverage is further decreased by specific materials:

Material	Range reduction vs LoS*
Wood, plaster, glass uncoated, without metal	0 - 10 %
Brick, press board	5 - 35 %
Ferro concrete	10 - 90 %
Metal, aluminium lining	see chapter "How to properly install the system"

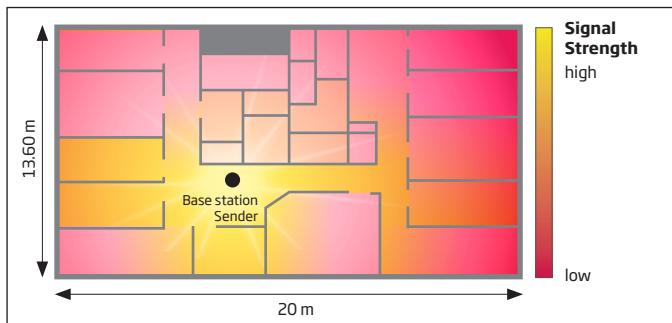
* **LoS** (Short for "line of sight") - a term being used in Radio frequency technologies to describe an unobstructed path between the location of the signal transmitter and the location of the signal receiver.

The following should be accepted as suggestions and evaluated while installing your system:

- During the night time, when there is no movement at all, wireless signal level can decrease up to 17%.
- Furniture and movement can increase or decrease signal level by approximately up to 20%.

So, that means the sensor's signal level can decrease up to about 37% or even increase slightly, depending on individual environmental factors.

Spread of radio signal within a building:

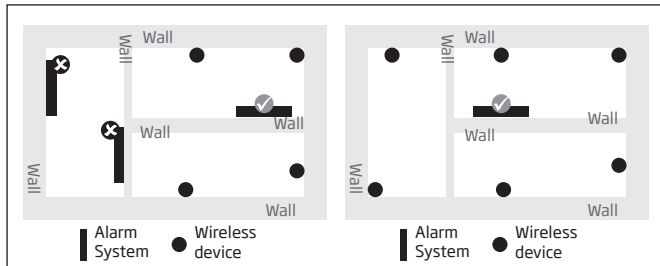


HOW TO PROPERLY INSTALL THE SYSTEM:

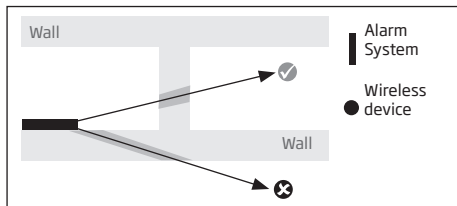
NOTE: It is HIGHLY RECOMMENDED to install your system with the Service Mode enabled (using Eldes Utility software). This installation method will ensure a better protection against variable environmental factors (the number of people moving throughout the secured area, material obstacles, etc.).

- Clear RF path of obstructions - Make sure the RF path is clear of obstructions. Antennas should be installed where they can “see” each other as much as possible. Make sure the antennas are high enough above any obstructions in the RF path.
- Pay attention to antenna alignment - Make sure the antennas are aligned correctly. In order to get the best result, you should mount your sensor according to their own manual's instruction, which you'll find at eldesalarms.com
- Know you overall system gain required to meet the distance. The more the distance between the radios, the more the overall system gain needs to be. If the signal level between the system and your wireless device is equal or lower than 30%, then you must additionally use wireless signal repeater (EWR2).

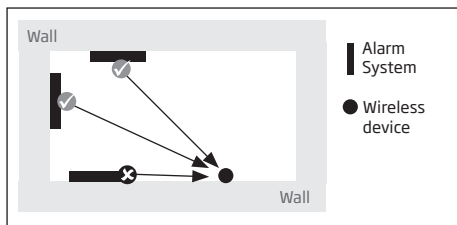
- We recommend that the best place for Alarm System installation is at the approximately estimated centre of all mounted Wireless devices across your premises (house/flat), and it's not necessarily the centre of a room itself, i.e. positioning basically depends on the total of the secured area. For a better visual perception, see the following picture:



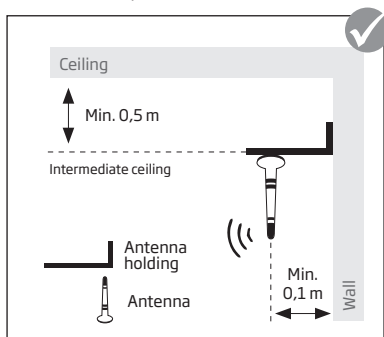
- The angle at which the transmitted signal hits the wall is very important. The effective wall thickness - and with it the signal attenuation - varies according to this angle. Signals should be transmitted as directly as possible through the wall.



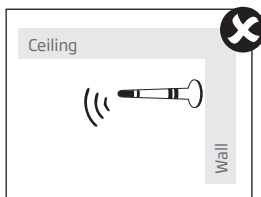
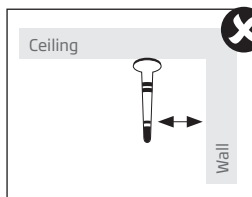
- When using devices with an internal receiving antenna, the device should not be installed on the same side of the wall as the transmitter. Near a wall, the radio waves are likely to be subject to interfering dispersions or reflections. Consequently, the position of the antenna has to be on the opposite or connecting wall.



- When using Alarm System with an external antenna, the ideal antenna installation place is a central location in the room. Where possible the antenna should be at least 10 - 15 cm away from the wall corner or concrete ceiling.

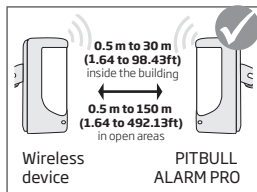
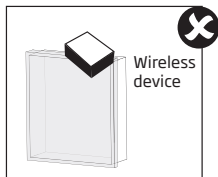
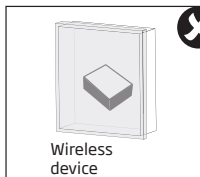
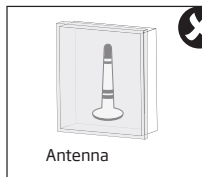


- Wrong antenna mounting by the ceiling:



• Massive objects made of metal, such as metallic separation walls and metal inserted ceilings, massive wall reinforcements and the metal foil of heat insulations, reflect electromagnetic waves and thus create what is known as radio shadow. However singularized small metal studs, e.g. the metal studs of a gypsum dry wall, don't show a recognizable screening.

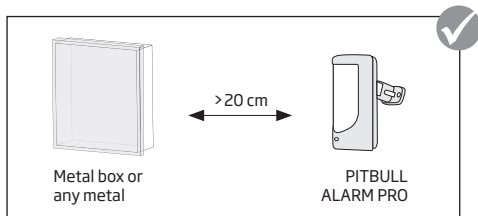
- Internal antenna, mounted on metal surfaces (typically 30% loss of range)
- Using any type of antenna inside metallic frames (typically 30% loss of range)



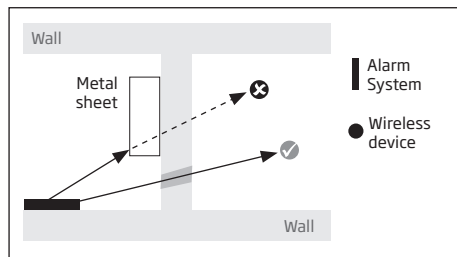
Recommended installation:

- face the front side of the wireless device towards the antenna
- keep the distance: 0,5 to 30m (1.64 to 98.43ft) inside the building, 0,5 to 3000m (1.64 to 9842.5ft) in open areas

- Keep the distance of at least 20cm (7.87in) or more between your wireless device/Alarm System and the metal box/metal sheet or any object of this material:



- Metal separation walls: It can be noticed that radio transmission even works with metal indoor separation walls. This happens through reflections: Walls made of metal or concrete reflect the electromagnetic waves. The radio waves reach the next room or floor via a non metallic opening.



9. RELATED PRODUCTS



EWS2 - wireless outdoor siren



EWF1 - wireless smoke detector
EWF1CO - wireless smoke and CO detector



EW2 - wireless zone and PGM
output expansion module



EKB3W/EWKB4 - wireless LED keypad



EWK2 - wireless keyfob



EWD2 - wireless magnetic door contact/shock sensor/flood sensor



EWS3 - wireless indoor siren



EWD3 - wireless magnetic door contact/shock sensor/flood sensor



EW P2/EW P3 - wireless PIR sensor
(motion detector)



EW R2 - wireless signal repeater



EW K2A - wireless keyfob



ES R100 - digital receiver

PITBULL ALARM PRO/PITBULL ALARM PRO-3G Installation and Configuration Manual v1.0 **Valid for PITBULL ALARM PRO v1.00.20 and up PITBULL ALARM PRO - 3G v1.02.02 and up** **(later referred to as “the system”, “the device”, “the unit” or “the detector”)**

Please read and follow these safety guidelines to safeguard yourself and others:

- DO NOT use the system where it can interfere with other devices - such as medical devices
- The alarm system radio transceiver operates in the following bands:
- PITBULL ALARM PRO - European frequencies 900/1800MHz; PITBULL ALARM PRO-3G - European freq. 900/1800/2100MHz; PITBULL ALARM PRO-3G - North American freq. 850/1900MHz
- DO NOT use the system in hazardous environments
- DO NOT expose the system to high humidity, chemical environments or mechanical impact
- DO NOT attempt to repair the system yourself - any repairs must be carried out by fully qualified personnel only



The PITBULL ALARM PRO comes with its own power supply unit so you can plug it in straight away. The unit is not meant for outdoor use, i.e. you should use it inside a building and the power supply must be plugged into a standard Euro 2-pin socket or UK 3-pin socket (depending on the version you have bought). The main circuit should be protected by short circuit or over-current protection.



Please use the power supply unit which comes with your PITBULL ALARM PRO, as it meets the EN 60950-1 standard. Any additional device you connect to the system, such as a computer, must also be powered by an EN 60950-1 approved supply.



Disconnect the mains power before installing. Never install or carry out maintenance during stormy weather. The electric socket that powers the system must be easily accessible. In case of power cut, the system is powered by a back-up battery.



CAUTION: RISK OF EXPLOSION if battery is replaced by an INCORRECT TYPE. Dispose of used batteries according to the instructions. Take care when connecting positive and negative battery terminals.



To switch the system off, unplug the external electric power supply and disconnect the battery by first removing the front cover of the device. A blown fuse cannot be replaced by the user. The replacement fuse has to be of the kind indicated by the manufacturer (fuse F1 model - MINISMDC050F 0.5A; fuse F2 model - MINISMDC020F 0.2A).



If you use a computer to select your ideal settings, it must be earthed.



The WEEE (Waste Electrical and Electronic Equipment) marking on this product (see left) or its documentation indicates that the product must not be disposed of together with household waste. To prevent possible harm to human health and/or the environment, the product must be disposed of in an approved and environmentally safe recycling process. For further information on how to dispose of this product correctly, contact the system supplier, or the local authority responsible for waste disposal in your area.

Contents of pack:

Item	Quantity
Alarm system.....	1
Power supply	1
User manual	1
Mini USB cable	1
Back-up battery	1
Screws	2

Item	Quantity
Wood Screws	2
Nuts	2
5,6kΩ resistor	1

Not included: You will need to supply your own SIM card - we recommend you get a contract SIM, not Pay As You Go.

TERMS OF USE

The following terms and conditions govern use of the PITBULL ALARM PRO (or PITBULL ALARM PRO -3G) device and contains important information on limitations regarding the product's use and function, as well as information on the limitations of the manufacturer's liability. Please carefully read these terms and conditions. For more information on your product, please visit www.eldesalarms.com

TECHNICAL SUPPORT

In order to ensure continuous and proper operation of the PITBULL ALARM PRO (or PITBULL ALARM PRO -3G) device and uninterrupted service, it is the responsibility of the User to make sure that: (I) the product is properly installed, and (II) there is constant internet or GSM connection and electrical supply (low battery must be replaced in time). If you experience difficulty during the installation or subsequent use of the system, you may contact ELDES, UAB distributor or dealer in your country/region. For more information see www.eldesalarms.com

WARRANTY PROCEDURES

Warranty and out of warranty service should be obtained by contacting the system integrator/dealer/retailer/e-tailer or distributor where the customer purchased the product. When requesting for service, the proof of purchase and the product serial number must be provided. The return of the defective product should be strictly through the original route of purchase, and the customers shall pack the product appropriately to prevent the returned product from suffering in the transportation.

MANUFACTURER WARRANTY

ELDES provides a limited warranty for its products only to the person or entity that originally purchased the product from ELDES or its authorized distributor or retailer and only in case of defective workmanship and materials under normal use of the system for a period of twenty four (24) months from the date of shipment by the ELDES, UAB (Warranty Period). Warranty obligations do not cover expandable materials (power elements and/or batteries), holders and enclosures. The warranty remains valid only if the system is used as intended, following all guidelines outlined in this manual and in accordance with the operating conditions specified. The warranty is void if the system has been exposed to mechanical impact, chemicals, high humidity, fluids, corrosive and hazardous environments or force majeure factors. If a hardware defect arises and a valid claim is received within the Warranty Period, at its own discretion, ELDES, UAB will either (a) repair a hardware defect at no charge, using new or refurbished replacement parts, or (b) exchange the product with a product that is new or which has been manufactured from new or serviceable used parts and is at least functionally equivalent to the original product, or (c) refund the purchase price of the product.

LIMITED LIABILITY

The buyer must agree that the system will reduce the risk theft, burglary or other dangers but does not provide guarantee against such events. ELDES, UAB will not assume any responsibility regarding personal or property, or

revenue loss while using the system. ELDES, UAB is not affiliated with any of the Internet providers, therefore, it shall not responsible for the quality of Internet service.

ELDES, UAB shall also assume no liability due to direct or indirect damage or loss, as well as unreceived income when using the system, including cases, when the damages arise due to the above mentioned risks, when due to breakdown or malfunction the user is not informed in a timely manner about a risk which has arisen. In any case, the liability of ELDES, UAB, as much as it is allowed by the laws in force, shall not exceed the price of acquisition of the product.

CONSUMER PROTECTION LAWS

FOR CONSUMERS WHO ARE COVERED BY CONSUMER PROTECTION LAWS OR REGULATIONS IN THEIR COUNTRY OF PURCHASE OR, IF DIFFERENT, THEIR COUNTRY OF RESIDENCE, **THE BENEFITS CONFERRED BY THIS WARRANTY ARE IN ADDITION TO ALL RIGHTS AND REMEDIES CONVEYED BY SUCH CONSUMER PROTECTION LAWS AND REGULATIONS.** This warranty grants upon you specific legal rights, and you may also have other rights that vary by country, state or province.

Dear Customer,

Thank you for choosing to purchase our alarm system to protect your property. Your thoughtful decision will ensure reliable protection for many years as all ELDES products are manufactured to meet the highest standards. We are confident that you will be completely satisfied with your product. However, in the unlikely event that you do experience a problem, please contact the dealer from whom you made your purchase.

ELDES, UAB
www.eldesalarms.com

Made in the European Union
www.eldesalarms.com